



SOUNDPROOFING
WASTE PIPES

TECSOUND® TUBE S



TECSOUND® TUBE S



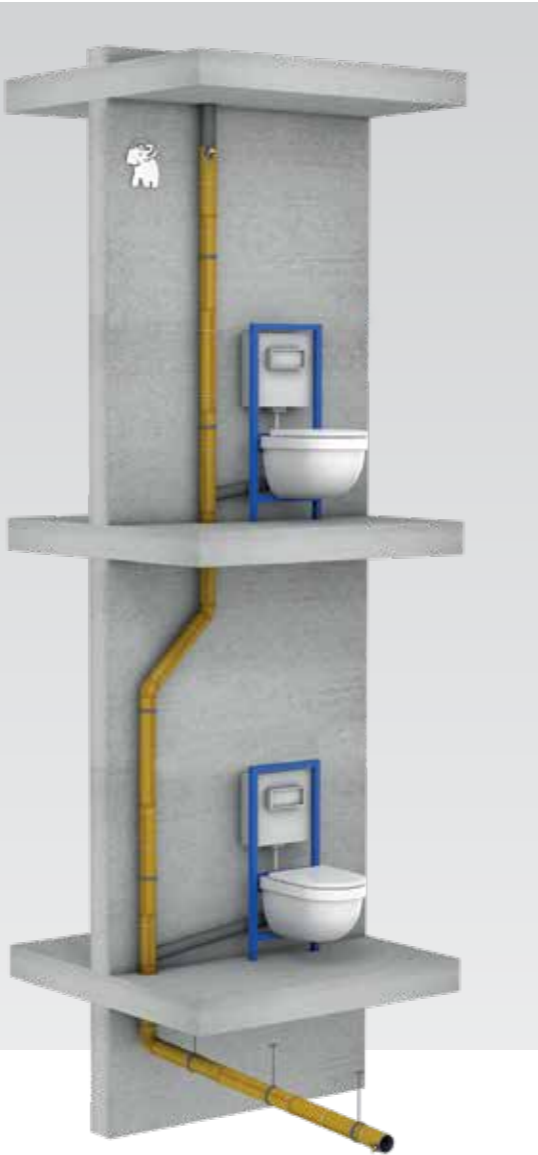
Tecsound® Tube S is a soundproofing complex made out of Tecsound membrane bonded to a non-woven porous polyester fleece.

Tecsound® Tube S is specially designed for :

Soundproofing of waste water pipes (tertiary and residential buildings).

Vibration damping and **structural noise attenuation**.

Tecsound® Tube is suitable to soundproof all type of pipes: PVC, fiber cement, metal.



TECSOUND® TUBE S

- Thickness → 4,75 mm
- Dimension of roll → 8 x 0,4 m
- Roll per pallet → 40

Sales unit : roll.
Vertically placed on pallet.

ACCESSORY

Tecsound® S50 Band 50



The +

- Low thickness helps installation.
- Suitable for new and refurbishment jobs.
- Does not crack or break at low temperatures.
- Practical use: suitable for use in confined spaces, flexible and adaptable to elbows and branches.
- Excellent ageing resistance.
- Easy to handle and cut.
- Easy and quick installation directly on the drain pipe.
- High performance : significant reduction of airborne and impact noise.



Information on the level of emission of volatile substances in indoor air, presenting a risk of toxicity by inhalation, on a class scale ranging from A+ (very low emissions) to C (high emissions).

INSTALLATION GUIDELINES

- A-** Cut the roll at the desired length not exceeding 1 meter.
If the diameter is below 100 mm, cut the roll crosswise at the pipe diameter providing further 50 mm for the overlaps.
- B-** Wrap the Tecsound® Tube S with the polyester felt side around the pipe. In case of refurbishment, pipe clamps must be open to allow a continuous insulation of the pipe.
- C-** Fasten the product using cable ties every 30-40 cm.
- D-** Seal overlaps and joints using Tecsound® S50 Band 50.
- E-** Apply Tecsound S50 Band 50 to elbows to improve impact noise damping. Apply the adjoining pieces butt joined without leaving any gaps.

Warnings

- In case of refurbishment, start the installation of the Tecsound Tube from the pipe clamps. Calculate the number of pieces needed.
- If new job, please ensure that the pipe clamps are big enough to embrace the soundproofing solution.



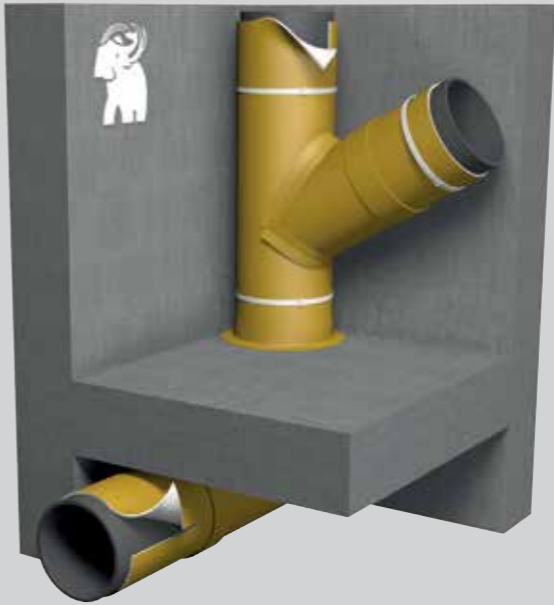
Acoustic performance

Soundproofing Solution performance Index

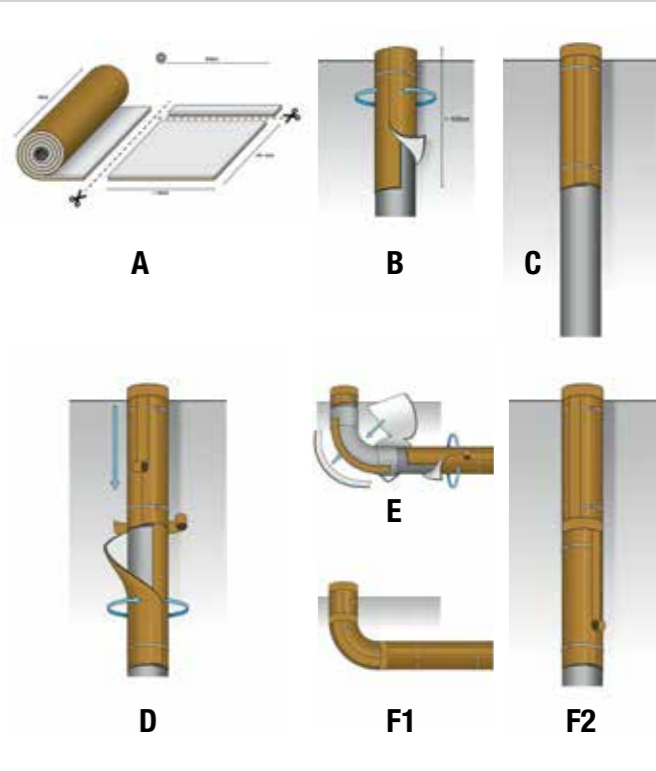
Insertion loss factor (IL_{a,A}) :

Measured in dB(A), defines the acoustic performance following EN 14366 (2005) of the insulation wrapped around a 100 mm PVC waste water pipe.

The higher the IL_{a,A} , the better the insulation.



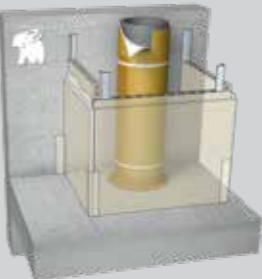
Characteristics	Value
Flow	2,0 l/s
Airborne noise L _{an} bare PVC pipe	55
Airborne noise L _{an} PVC + Tecsound Tube	41
Acoustic insulation - Insertion loss of airborne noise (IL _{a,A})	14



Acoustic performance of the pipe technical shafts

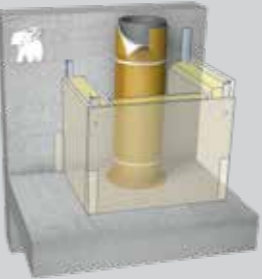
Airborne noise pressure level L_{an} and structural noise L_{sc} measured in dB (A) of the waste water pipe L_{nAT} radiated in a room = L_{an} + L_{sc}.

The lower L_{nAT} , smaller is the noise emission.



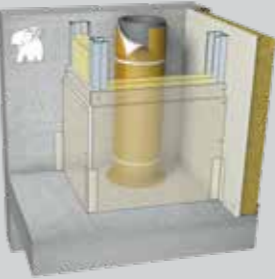
Honeycomb partition 50 mm

Characteristics	Bare PVC	PVC + Tecsound TUBE
Straight vertical pipe	36	23
Straight pipe with 45° deflection	44	33
Horizontal pipe	41	28



Lightweight partition with mineral wool

Characteristics	Bare PVC	PVC + Tecsound TUBE
Straight vertical pipe	25	18
Straight pipe with 45° deflection	35	26
Horizontal pipe	29	20



1/2 partition, 2 plasterboard standard with mineral wool

Characteristics	Bare PVC	PVC + Tecsound TUBE
Straight vertical pipe	24	16
Straight pipe with 45° deflection	34	25
Horizontal pipe	28	18

SOPREMA at your service:

Do you have a question about a specific project, the products or application possibilities? Then contact our technical team.

All information can be found on:
www.soprema.co.uk

SOPREMA UK

SOPREMA House
Freebournes Road
Witham, Essex, CM8 3UN

Tel : 0330 058 0668
info@soprema.co.uk
www.soprema.co.uk

