

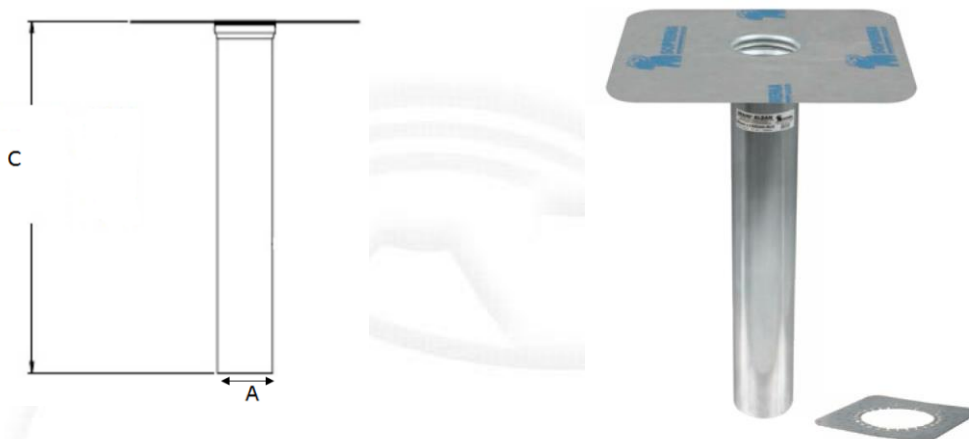
## DRAINI SEL

### Description

The rainwater outlet **DRAINI SEL** is composed of a flexible flange made from a special polyester and an aluminum outlet pipe. The two components are assembled by a patented seam method. A support plate with hole for the outlet pipe is available if extra support of the fleece is necessary around the outlet pipe.

The **DRAINI SEL** is used in the liquid applied ALSAN PMMA and ALSAN PU waterproofing systems.

The **DRAINI SEL** has a straight outlet pipe:



### Characteristics

Flange	
Composition	polyester / PU-foil
Mass (g/m <sup>2</sup> )	340
Thickness (mm)	1,5
Tensile strenght L / T (N/5cm)	1450 / 800
Elongation L / T(%)	65 / 73
Outlet pipe	
Composition	aluminium
Support plate	
Composition	aluminium
Thickness (mm)	1,5

Diameter outlet pipe (A) (mm)	Dimensions flange (mm)	Length outlet pipe (C) (mm)	Dimensions support plate (mm)
50	303 x 303	400	89 x 177
63	303 x 303		102 x 190
75	370 x 370		114 x 202
95	370 x 370		134 x 222

### Packing

**DRAINI SEL** rainwater outlets must be stored on a flat surface, protected against atmospheric conditions. When exposed, the aluminium pipe can show white traces of corrosion, which however do not affect the functioning.

TDS-NE-MISBE0037.a/EN

**SOPREMA** reserves the right to amend the composition of its material and consequently their prices, without prior notice. For this reason, all orders will be accepted only in accordance with the conditions and technical specifications in force at the date of order.

Contact: [www.soprema.com](http://www.soprema.com)

## Installation

---

Apply a first layer of liquid waterproofing.

Insert the **DRAINI SEL** in the drain pipe with the flange in the wet layer of the liquid waterproofing. Apply immediately the second liquid waterproofing layer (wet in wet) whilst completely covering the flange. Always consult the local regulations (location, sizing, ...) and contact the manufacturer for technical questions.

By making use of the sleeve with the seal the **DRAINI SEL** with diameter 50 and 75 mm can be connected to be made both air- and watertight with the drain-pipe of the same diameter. Reducers are required for the other diameters.

## Special indications

---

### Hygiene, Health and Environment

This product does not contain any substance which is likely to be detrimental to your health or to the environment and complies with generally admitted Health and Safety Requirements.

### Quality-, Environment- and Safety Management

**SOPREMA** always recognises as a high level of importance the quality of the products, the environment and safety. For this reason, we operate independently monitored Quality and Environment Assurance Systems in line with **EN ISO 9001** and **EN ISO 14001**.