

**FLAG**

by **SOPREMA**



**SYNTHETIC**  
WATERPROOFING

**FLAGON PVC**



**SOPREMA**  
GROUP

# FLAG PVC

## AN INTRODUCTION...

Flagon PVC synthetic waterproofing membranes; high performance, flexible membranes, designed for exposed flat, inverted, barrel, mono-pitch and ballasted and roofing applications.







## FLAGON PVC

# SYNTHETIC WATERPROOFING



### WATERPROOFING EXPERTISE

Worldwide leader in the field of waterproofing and insulation systems , SOPREMA is recognised for high quality products and technical expertise.

For over 100 years, SOPREMA has been known for its utilisation of advanced research and development capabilities that do not follow trends, but set the mark for the competition to follow.

Flagon PVC waterproofing membranes represent a new generation of synthetic waterproofing solutions, based on innovative formulations. Flagon development is based on over 50 years of extensive synthetic membrane manufacturing experience and industry leading technologies.

### HIGH PERFORMANCE VERSATILITY

Modern architecture requires high performance materials and solutions, providing durable results in terms of functionality, profitability, and attractiveness. To meet these requirements, SOPREMA has developed a unique range of PVC waterproofing membranes. These modern and reliable systems provide users with many benefits.

Flagon PVC waterproofing systems are suitable for both new build and refurbishment projects. The range offers systems for fully adhered, ballasted and mechanically fixed applications.

### CERTIFICATION

Flagon PVC waterproofing is BBA certified. Flagon PVC is manufactured according to the principles of sustainable construction, respecting the environment, human resources and the economy! During the manufacturing process, rainwater is collected and used to cool machinery, then recirculated through a closed circuit, avoiding any chance of environmental pollution.

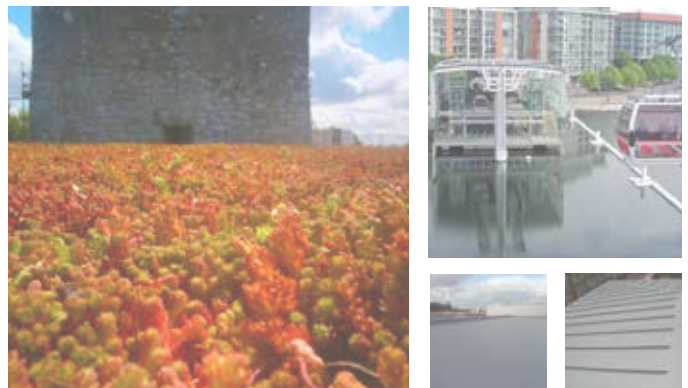
## ADVANTAGES

- + **Flexible at low temperatures**
- + **High mechanical resistance**
- + **Resistant to UV and weathering**
- + **Exceptional dimensional stability**
- + **Lifetime in excess of 35 years.**



## SOPRACOVER WARRANTY

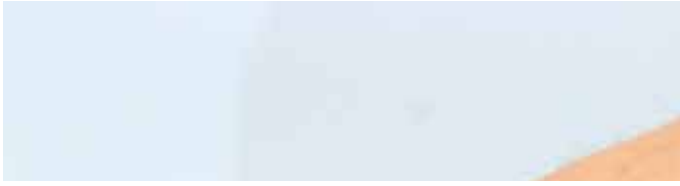
20 year warranties are available for Flagon PVC systems as standard, determined by the system specified. All SOPREMA products are installed by approved contractors to ensure a consistent standard of workmanship. There are no minimum surface area or project value requirements to qualify for the Sopracover warranty.



## TECHNICAL SERVICES

Technical expertise is a key strength of SOPREMA, our technical experts are available to assist you from design right through installation, providing the following services:

- » Surveys, core samples and condition reports for refurbishment projects
- » Design consultations and advice for new build projects
- » Standard details and CAD drawings
- » Educational seminars
- » Detailed project specifications
- » Interim and completion site inspections



# FLAGON PVC APPLICATIONS



## ADVANCED TECHNOLOGY

Utilising thermo-plastic polymer technology, Flagon PVC membrane systems provide excellent waterproofing protection. These systems provide light-weight waterproofing solutions, resulting in a lower permanent load on the structure onto which the systems are applied. These significant benefits make Flagon PVC systems particularly suited to commercial projects.

Flagon PVC systems are the perfect solution for quick and easy installation on large scale commercial projects that demand flexibility and excellent dimensional stability. Flagon PVC systems are particularly suited to roofing applications such as; stadiums, supermarkets, distribution centres, production facilities and complex profile designs.

## ADVANTAGES

Flagon PVC membranes have a unique formulation, are light weight and fully recyclable at the end of their service life. With a life expectancy of over 35 years, Flagon PVC membranes guarantee longevity.

- + **Flexible**
- + **Highly aesthetic**
- + **Light weight**
- + **Fully recyclable**
- + **UV resistant**



## FLAT ROOFS



Light-weight, reinforced synthetic membrane systems developed for flat and mono-pitch roofs.



## COMPLEX PROFILES









Decorative, reinforced synthetic waterproofing systems for complex profiles and facades



## CURVED STRUCTURES



Flexible, reinforced synthetic waterproofing systems for curved, barrel and wave form roofs.

						
Flagon® SR			●	●		
Flagon® SFc	●	●	●		●	
Flagon® SV	●	●	●			
Flagon S						●

### LEGEND



Waterproofing under protection



Waterproofing under plots & pavers



Waterproofing under extensive green roof systems



Mechanically fixed waterproofing



Fully adhered waterproofing



Waterproofing for details

# FLAGON PVC

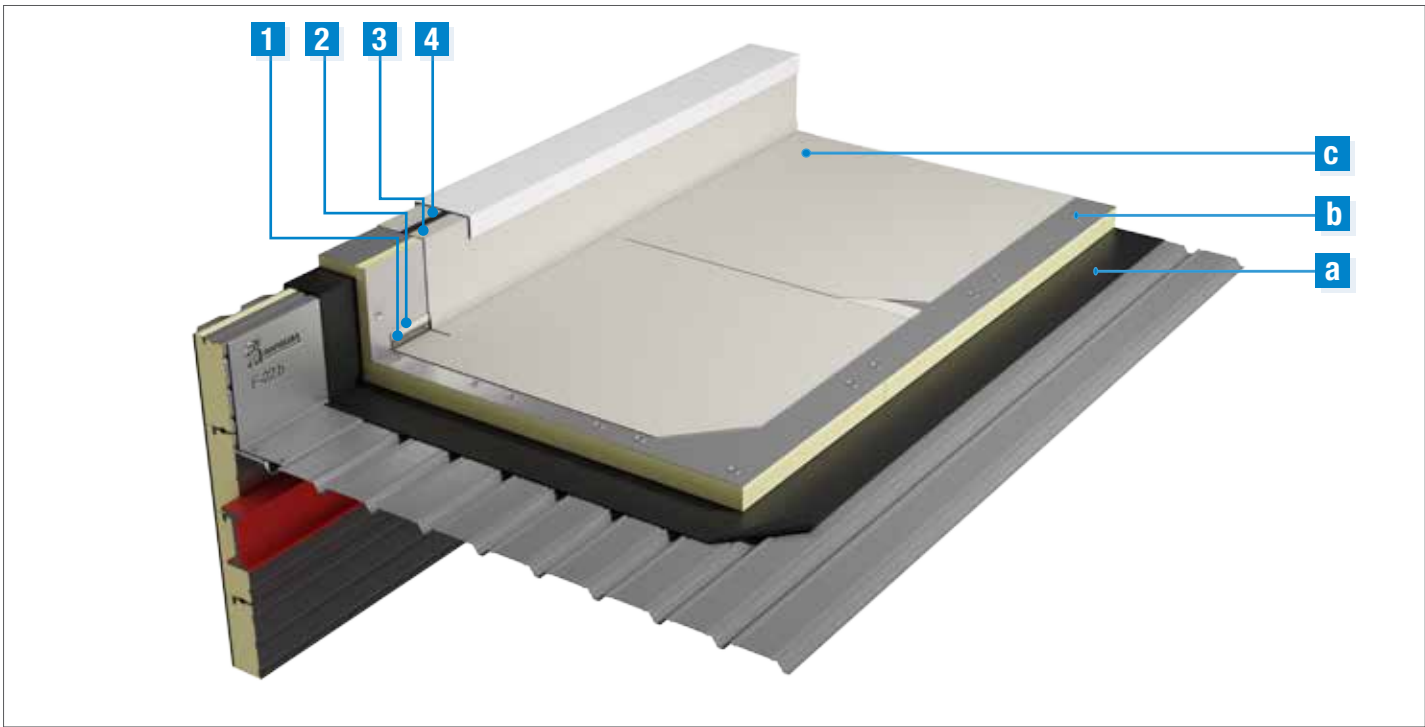
## EXAMPLE SYSTEMS

### BESPOKE SYSTEMS FOR YOUR PROJECT

We have a vast range of synthetic waterproofing systems, the systems that are displayed on these pages are indicative of typical system build ups that are specified. For a bespoke system recommendation that meets the individual requirements of your project, please contact us. Our contact details can be found on the back cover of this document.

### MECHANICALLY FIXED SYSTEM

METAL DECK - WARM ROOF

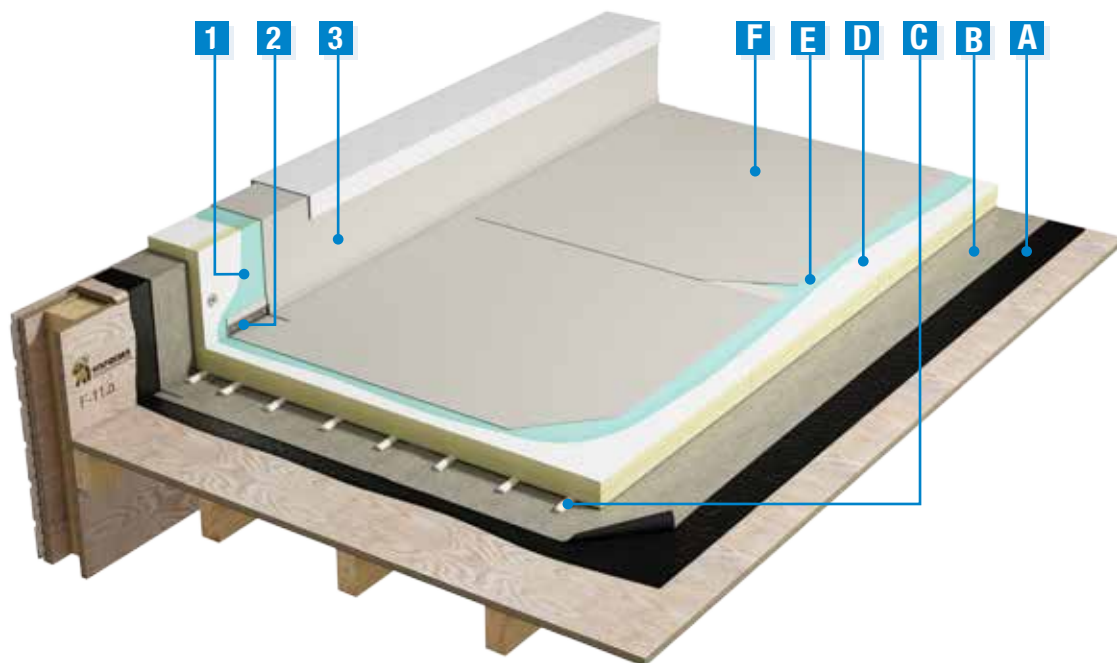


	FIELD AREA	PVC 20 YEAR SYSTEM
<b>A</b>	vapour layer	VAPOR FLAG
<b>B</b>	insulation	SOPRATHERM F OR F CTF
<b>C</b>	waterproofing	FLAGON SR 1,5 mm

	UPSTAND	
<b>1</b>	metal	FLAG BAR
<b>2</b>	metal	PVC FLAGOFIL
<b>3</b>	waterproofing	FLAGON SR 1,5 mm
<b>4</b>	metal	FLAG TERMINATION TAPE

## FULLY ADHERED SYSTEM

TIMBER DECK - WARM ROOF



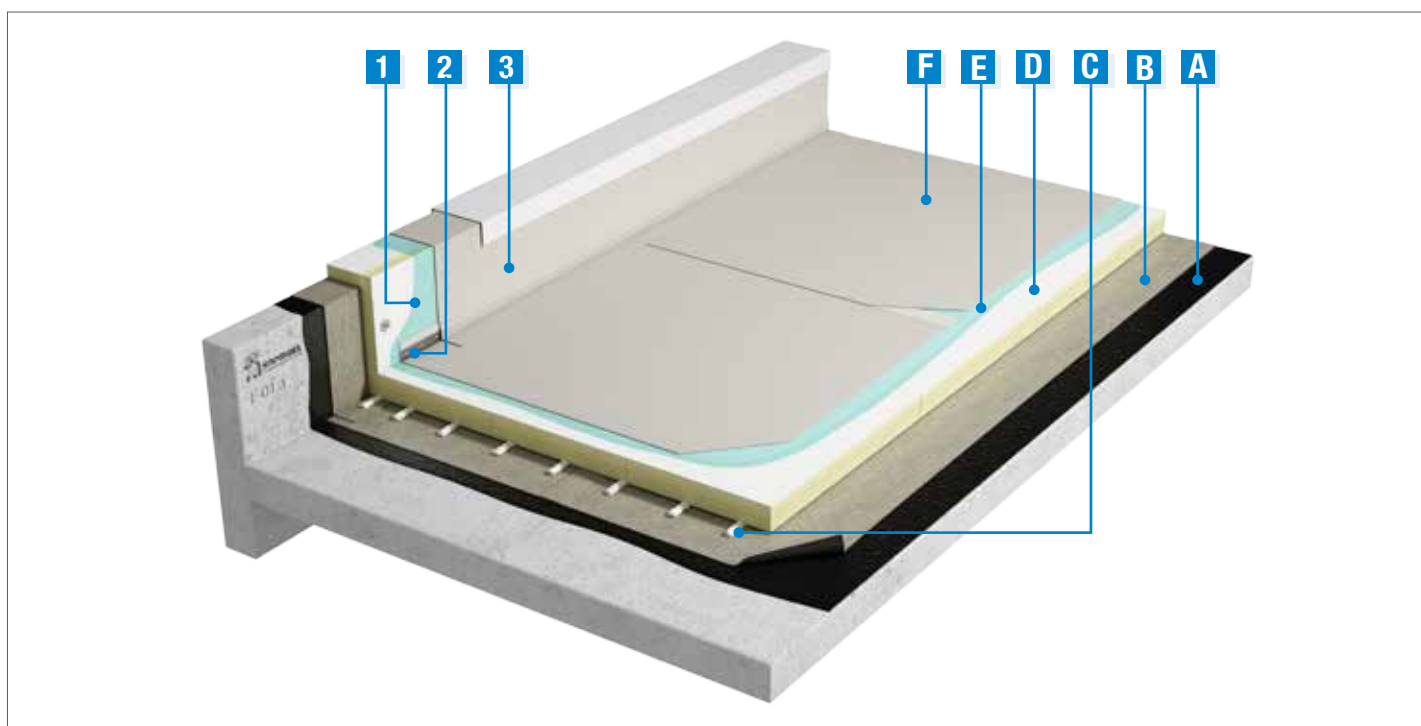
FIELD AREA		PVC 20 YEAR SYSTEM
<b>A</b>	primer	ELASTOCOL 600
<b>B</b>	vapour area	SOPRAVAP STICK S 16
<b>C</b>	insulation adhesive	COLTACK EVOLUTION
<b>D</b>	insulation	SOPRATHERM G OR G CTF
<b>E</b>	adhesive	FLAGON FLEXOCOL W LV ADHESIVE
<b>F</b>	waterproofing	FLAGON SFC 1,5 mm

### UPSTAND

<b>1</b>	adhesive	FLAGON FLEXOCOL C ADHESIVE
<b>2</b>	metal	FLAG PEEL STOP
<b>3</b>	waterproofing	FLAGON SR 1,5 mm

## FULLY ADHERED SYSTEM

CONCRETE DECK - WARM ROOF



	FIELD AREA	PVC 20 YEAR SYSTEM
<b>A</b>	primer	ELASTOCOL 600
<b>B</b>	vapour layer	SOPRAVAP STICK S 16
<b>C</b>	insulation adhesive	COLTACK EVOLUTION CA
<b>D</b>	insulation	SOPRATHERM G OR G CTF
<b>E</b>	adhesive	FLAGON FLEXOCOL C
<b>F</b>	waterproofing	FLAGON SFC 1,5 mm

### UPSTAND

<b>1</b>	adhesive	FLAGON FLEXOCOL C ADHESIVE
<b>2</b>	metal	FLAG PEEL STOP
<b>3</b>	waterproofing	FLAGON SV EXIRUDED 1,5 mm



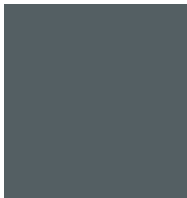
## FLAGON PVC

# UNLIMITED COLOUR UNRESTRICTED DESIGN

The Flagon PVC range offers completely unrestricted design due to its ability to accommodate even the most complex structures and design profiles. The PVC membranes in the Flagon range can be ordered in any RAL colour to suit specific aesthetic design requirements. Standing seam profiles can also be incorporated into the system in order to provide the aesthetic finish of a traditional standing seam metal roof.

The versatility and performance benefits that the Flagon PVC systems offer, have resulted in these products becoming increasingly popular for many high profile projects.

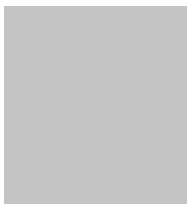
### COLOURS & DECORATIVE FINISHES



#### STANDARD COLOURS

Lead Grey RAL 7012

Light Grey RAL 7047



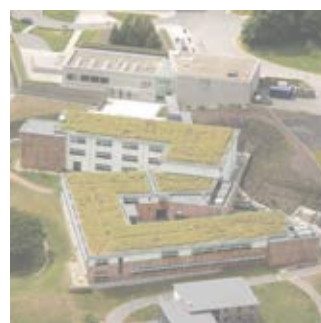
#### DÉCOR PROFILES

Standing seam profiles are available for Flagon PVC systems, they provide an alternative to traditional folded or standing seam metal covering.



#### RAL COLOURS

The finishing components in our range can be ordered in any RAL colour to suit specific aesthetic design requirements.





by **SOPREMA**

For further technical support please  
contact SOPREMA IRELAND:

T: +353 (0) 1 405 77 96

E: [info@soprema.ie](mailto:info@soprema.ie)

Further information is available at  
[www.soprema.ie](http://www.soprema.ie)

