



sustainability  
waterproofing

worldwide references





# SOPREMA



The **SOPREMA** group offers a large range of high-quality products which provide innovative and practical solutions to specific needs in your projects (personal or civil engineering, construction): amongst these, **ELASTOPHENE®** and **SOPRALENE®**, which are just two of several types of bituminous waterproofing membranes, but also **ALSAN®** for liquid waterproofing, **UniverCell®** for insulation, **FLAXLINE®** for roof underlays, photovoltaic technology (by **Solardis**), PVC and TPO® ( by **FLAG®**), ... and more!

Our products are manufactured in 16 production sites around the world, which makes us never too far away from your construction site. Do not hesitate to contact us to see how we can contribute to your project. In this booklet you will find examples of some of the our projects.



# Membranes



Carrefour (Supermarket), [Belgium](#)



Community centre, [France](#)

3



Hard Rock Hotel, [USA](#)



Ford Show room, [Algeria](#)

## Membranes



4

Hospital, [Panama](#)



IUT, [Turkey](#)



HQ Hasselblad, [Sweden](#)



Technological and cultural centre, [China](#)



## Membranes Flag®



Football stadium Dynamo, [Ukraine](#)

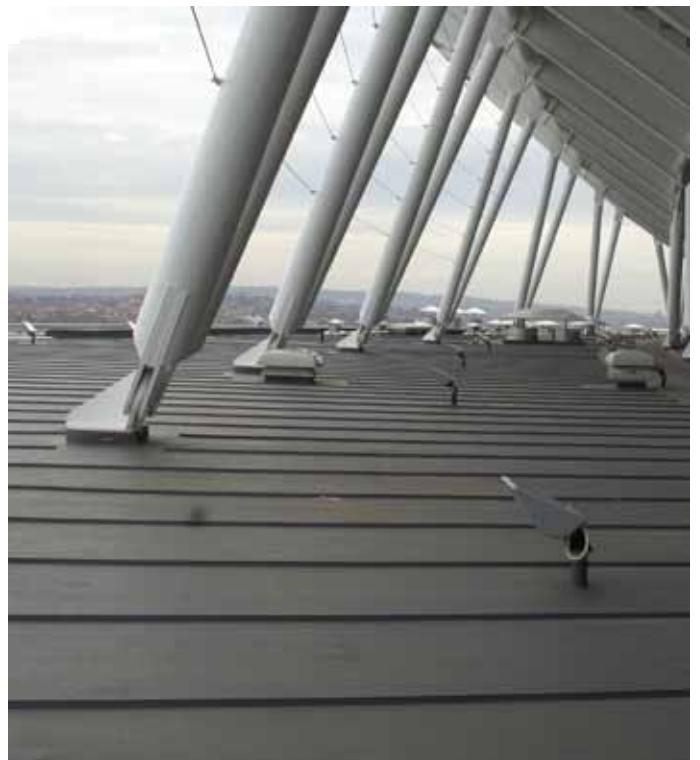


Gardaland, [Italia](#)

5



Tunneling , [Greece](#)



Wembley, stadium, [UK](#)



## Liquid solutions

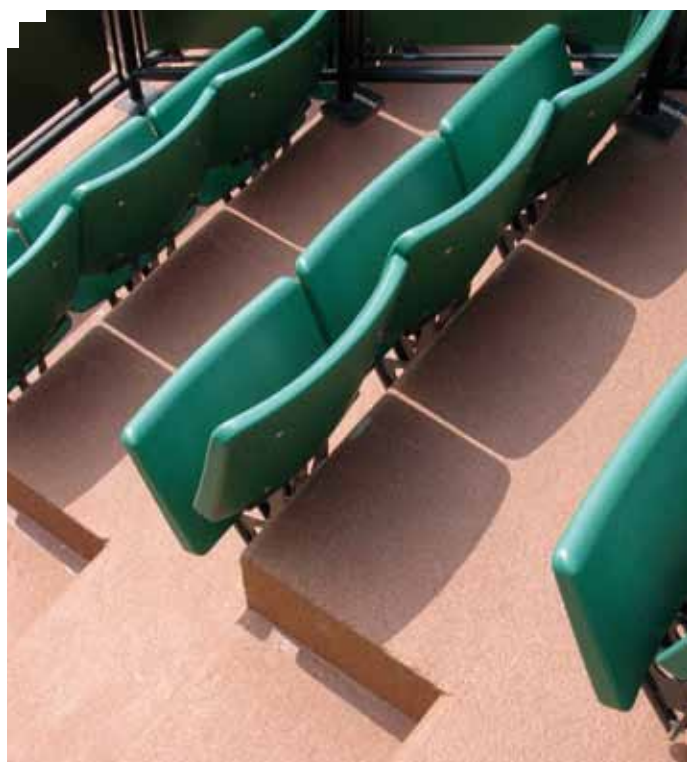


6

Terrace, USA (Alsan® RS)



Private-owned villa, Guadeloupe (Alsan® 500)



Roland Garros tennis stadium,  
France (Alsan® 500)

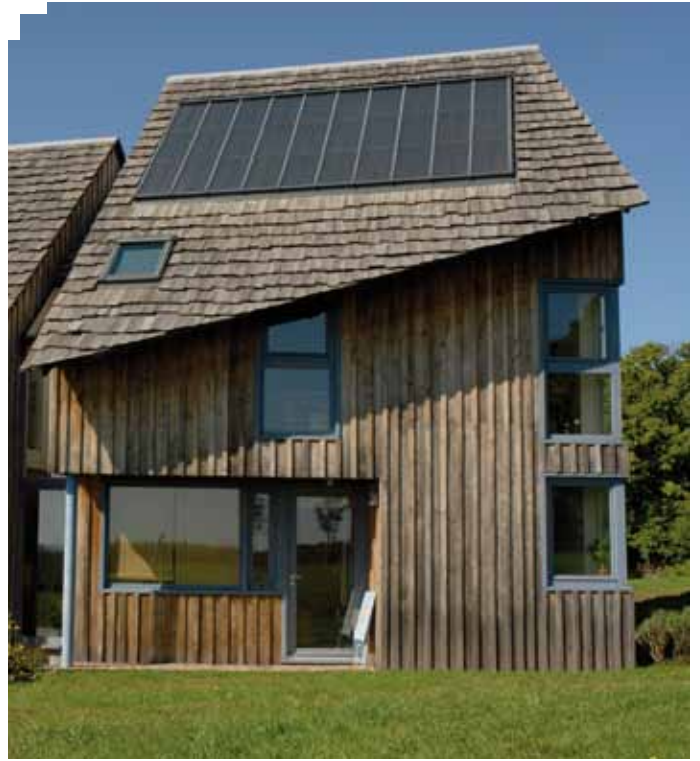


Bus terminal,  
Jamaica (Alsan® 500)

## Insulation



Wooden house, France (UniverCell®)



Wooden house, France (UniverCell®)

7



Wooden house, France (UniverCell®)



Petting zoo, France (UniverCell®)



## Roofing



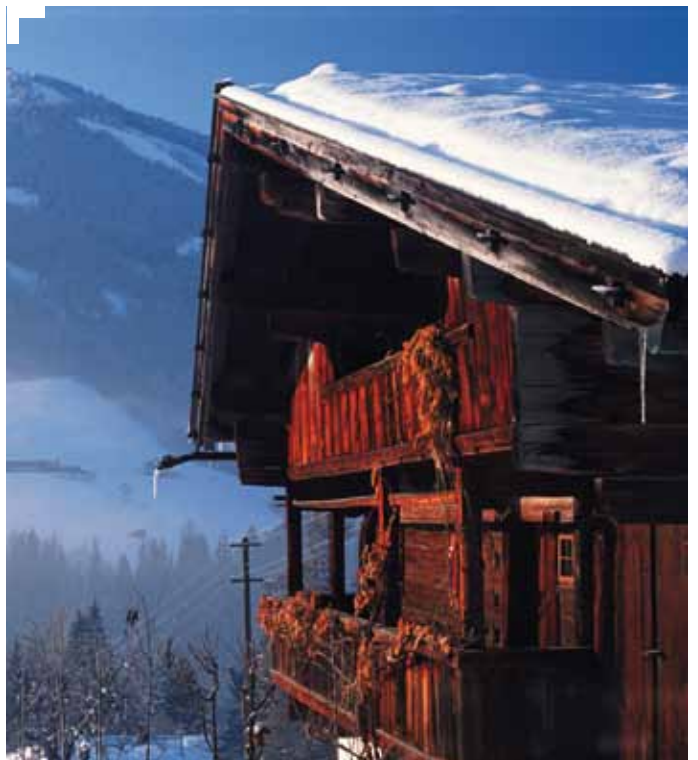
8 Brick house, France (Stratec II)



Roofer, France (Flaxline®)



Tertiary sector of the economy,  
France (Sopravap® kraft)



Chalet, France (Soprastick® Sarking)



## Civil engineering



Bridge on a highway, [Greece](#)



Bridge, [Portugal \(Antirock® P\)](#)

9



Bridge, [Guinea \(Antirock® P\)](#)

## Photovoltaics



10

HQ SOPREMA, France (Soprasolar®)



Sant Eloi, Spain (Soprasolar®)



Sant Eloi, Spain (Soprasolar®)



Orly Airport, France (Soprasolar®)





Château Ducal in Caen, [France](#)



Hotel, [France](#)

11



Seaside villa, [France](#)



Parking lot, [Eastern Europe](#)



## **SOPREMA at your service:**

If you have any queries or would like to discuss a project,  
feel free to call us!

### **Export department**

Phone: +33 (0)3 88 79 84 84  
[export@soprema.com](mailto:export@soprema.com)



# **SOPREMA**

**14 rue de Saint-Nazaire - BP 60121  
67025 STRASBOURG CEDEX 1 - FRANCE  
Phone. : +33 (0)3 88 79 84 84 - Fax : +33 (0)3 88 79 84 85  
[export@soprema.com](mailto:export@soprema.com) - [www.soprema.com](http://www.soprema.com)**

SOPREMA SAS with a capital of 51 550 000 €. Headquarters: 14 rue de Saint-Nazaire - BP 60121 - 67025 STRASBOURG Cedex 1. RCS: 485 196 877.  
SOPREMA reserves the right, according to the evolution of its knowledge and techniques, to modify the composition and the utilization conditions of its materials and consequently their prices, without prior notice. Therefore, all orders will be accepted only in accordance with the conditions and technical specifications in force on the day the order is received.