



SOPREMAPOOL

Catalogue

Swimming pool waterproofing solutions



| CONTENTS

| Soprema Group

p. 3

| **SOPREMAPOOL** Reinforced membranes

p. 4

SOPREMAPOOL 3D

p. 6

SOPREMAPOOL Feeling

p. 8

SOPREMAPOOL Design

p. 10

SOPREMAPOOL Premium

p. 12

SOPREMAPOOL One

p. 14

| Complements & Accessories

p.16

| Pool Training

p. 18

| Digital Tools

p. 19

SOPREMA GROUP



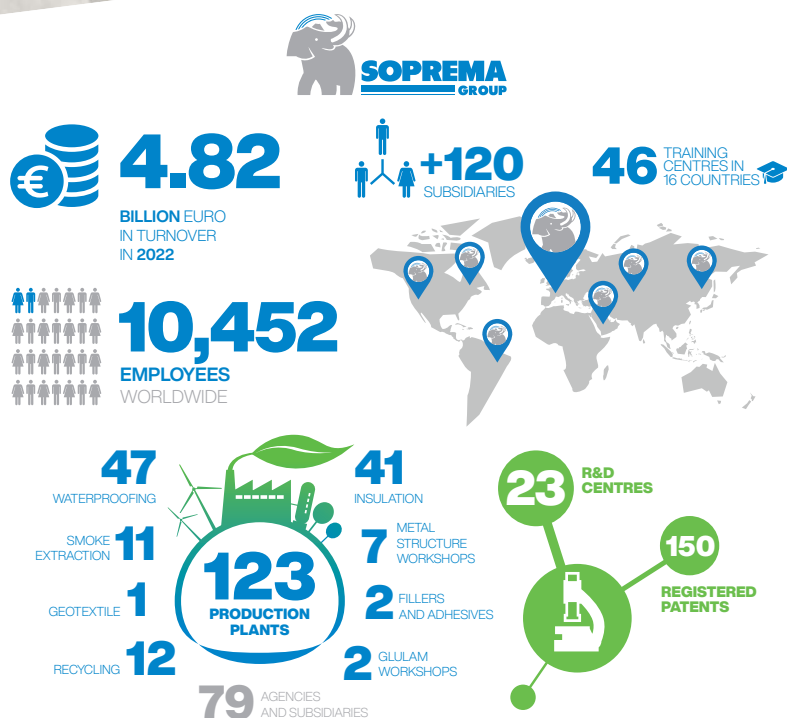
A family business since 1908, **SOPREMA** has established itself in recent years as one of the world's leading companies in waterproofing and thermal and sound insulation.

The development of our construction solutions is the outcome of close partnership between our customers, our sales, purchasing and technical departments, and our research and development centres.

Our product range is innovative and perfectly in line with market requirements and current standards.


SOPREMA products and services aim to meet the most discerning needs of construction professionals in terms of waterproofing roofs, reinforced synthetic membranes for waterproofing swimming pools, civil engineering projects, thermal and sound insulation, and photovoltaic and green roofs. At **SOPREMA** we work every day with our customers to find the right solution for each kind of need.

SOPREMA is a byword for strength and robustness with an outstanding track record and worldwide recognition for the quality of our reliable, durable and efficient products and systems.



At **SOPREMA** we are passionate about sustainability and working towards a sustainable construction model addressing two main points: manufacturing energy-efficient products and putting in place a closed, circular lifecycle construction model which makes it possible to reuse construction waste. A fresh vision of construction with more responsible and environmentally-friendly practices needs to be fostered.

SOPREMAPOOL



SOPREMA, a world leader in waterproofing solutions, offers a wide range of reinforced synthetic membranes and other complementary products for the installation and maintenance of swimming pools under the name **SOPREMAPOOL**.

Reinforced membranes



Product advantages



Optimal welding.



UV resistance.



Resistance against microorganisms with "**Bio Shield**" treatment.



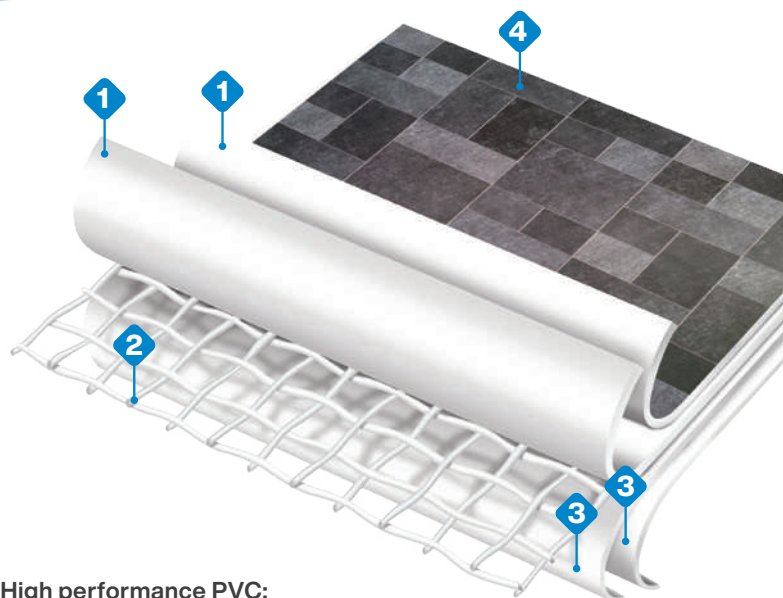
Impact resistance.



High mechanical resistance.



Resistance against standard chemicals for water treatment in swimming pools covered with a PVC liner.



1 High performance PVC:

Layers 1 & 2

2 Polyester reinforcement

3 High performance PVC:

Layers 3 & 4

4 Lacquer finish*

* Except SOPREMAPOOL Feeling and One



4-layer membranes

- Reinforced synthetic membranes manufactured by cast process with high quality raw materials (resins, plasticisers, stabilisers and pigments).
- Composed of four layers with different and complementary formulations, introducing a polyester reinforcement between the second and third layers. This reinforcement provides the membrane with great tensile strength and high dimensional stability.
- Its formulation and production process have been specially designed to comply with the strict performance parameters set by the European EN 15836-2:2010 standard.



Warranty

WARRANTY
12 years
WATERPROOFING

&

WARRANTY
3 years
STAINS*

WARRANTY
10 years
WATERPROOFING

SOPREMAPOOL
3D + DESIGN + PREMIUM

SOPREMAPOOL
FEELING + ONE

* Stains caused by bacteria.



« Bio Shield » treatment

Its formulation with "BIO SHIELD" treatment guarantees total resistance to the formation of microorganisms and prevents any molecular change.

SOPREMAPOOL 3D



Product advantages

- Attractive and stylish.
- Easy and quick installation.
- Sensory experience.
- Varnish coating.
- Exclusive designs.
- Multiple designs.

Sensitive Sand



180/100 reinforced membranes

PVC reinforced membranes of 1.8 mm manufactured by cast process. The varnished coating provides greater durability and resistance to colour fading, chlorine, stains, microorganisms and UV rays. With embossed finish, very comfortable to the touch.

SOPREMAPOOL 3D replicates the feel and look of mosaics and natural materials.



The stylish embossed motifs add to the characteristic advantages of reinforced PVC lining: simple and quick installation and high protective and waterproofing capacity.



Characteristics

- **Dimensions:** Roll of 1.65 x 25 m.
- **Regulation:** **SOPREMAPOOL 3D** has been tested for slip prevention according to the European standard EN 13451-1 (according to annex B of EN 15836-2) and DIN 51097 (1992).

C
Slipperiness
certificate



Sensory
experience



3D warranty

WARRANTY
12 years
WATERPROOFING

&

WARRANTY
3 years
STAINS*

* Stains caused by bacteria.

Sensitive Rock

Sensitive



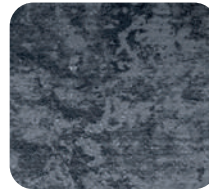
Sand
156988/SSSA



White
156988/SSHB



Grey
156988/SSGM



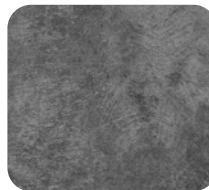
Black
156988/SSNB



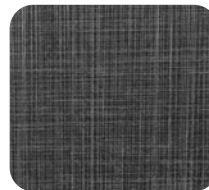
Sahara
156988/SSSH



Ocean
156988/SSOC



Rock
156988/SSRK



Infinite
156988/SSIN



Vanilla
156988/SSVA

Sensitive Bali

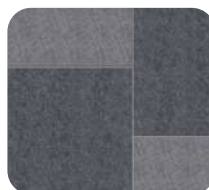


Bali Sand
156988/SSBS



Bali
156988/SSBA

The original



Bali XL
156988/SSXL

Sensitive Wood



Wood
156988/SSWO



White Wood
156988/SSWW

SOPREMAPOOL FEELING



Product advantages



Easy and quick installation.



Sensory experience.



New embossing.

Medium Grey



150/100 reinforced membranes

PVC reinforced membranes of 1.5 mm manufactured by cast process. High resistance to weatherings, UV rays and microorganisms. With embossed finish, very comfortable to the touch.



Feeling warranty

WARRANTY
10 years
WATERPROOFING



Characteristics

- **Dimensions:** Roll of 1.65 x 25 m.
- **Regulation:** SOPREMAPOOL FEELING has been [tested for slip prevention](#) according to the European standard EN 13451-1 (according to annex B of EN 15836-2) and DIN 51097 (1992).

C
Slipperiness
certificate



Sensory
experience



Blue



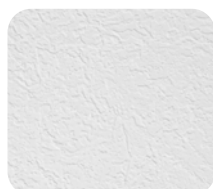
EMBOSSING



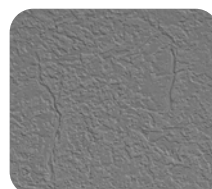
Sand
237460/SA



Azure Blue
237460/AB



White
237460/HB



Medium Grey
237460/GM



Basalt Grey
237460/GA

SOPREMAPOOL DESIGN



Product advantages



Flexible.



Smooth.



Varnish coating.



Exclusive designs.



Multiple designs.

Bali



150/100 reinforced membranes

PVC reinforced membranes of 1.5 mm manufactured by cast process. The varnished coating provides greater durability and resistance to colour fading, chlorine, stains, microorganisms and UV rays.



Characteristics

▪ **Dimensions:** Roll of 1.65 x 25 m.



GRIP (non-slip version)

Bali and Marbella Blue are available in the non-slip version.

▪ **GRIP dimensions:** Roll of 1.65 x 10 m.

▪ **Regulation:** SOPREMAPOOL GRIP has been [tested for slip prevention](#) according to the European standard EN 13451-1 (according to annex B of EN 15836-2) and DIN 51097 (1992).

C
Slipperiness
certificate



Design warranty

WARRANTY
12 years
WATERPROOFING

&

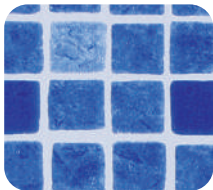
WARRANTY
3 years
STAINS*

* Stains caused by bacteria.

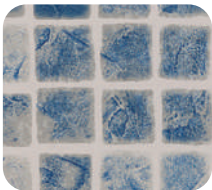


EMBOSSING

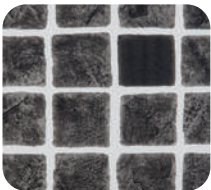
Code for GRIP membranes: 237747



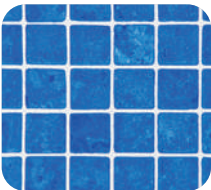
Marbella Blue
156975/MMB



Marbella Grey
156975/MMG



Marbella Black
156975/MMBK

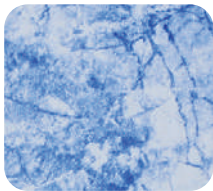


Mosaic Blue
156975/MNB

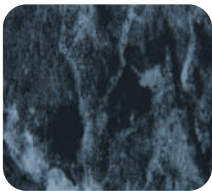


Bali
156975/BALI

The original



Sky Blue
156975/SB



Pearl Black
156975/PB

SOPREMAPOOL PREMIUM



Product advantages



Flexible.



Smooth.



Varnish coating.



Intense and multiple colours.

White



150/100 reinforced membranes

PVC reinforced membranes of 1.5 mm manufactured by cast process. The varnished coating provides greater durability and resistance to colour fading, chlorine, stains, microorganisms and UV rays.



Characteristics

▪ **Dimensions:** Roll of 1.65 x 25 m.



GRIP (non-slip version)

All colours are available in the non-slip version except Dark Blue and Wild Musk.

▪ **GRIP dimensions:** Roll of 1.65 x 10 m.

▪ **Regulation:** SOPREMAPOOL GRIP has been [tested for slip prevention](#) according to the European standard EN 13451-1 (according to annex B of EN 15836-2) and DIN 51097 (1992).

C
Slipperiness
certificate



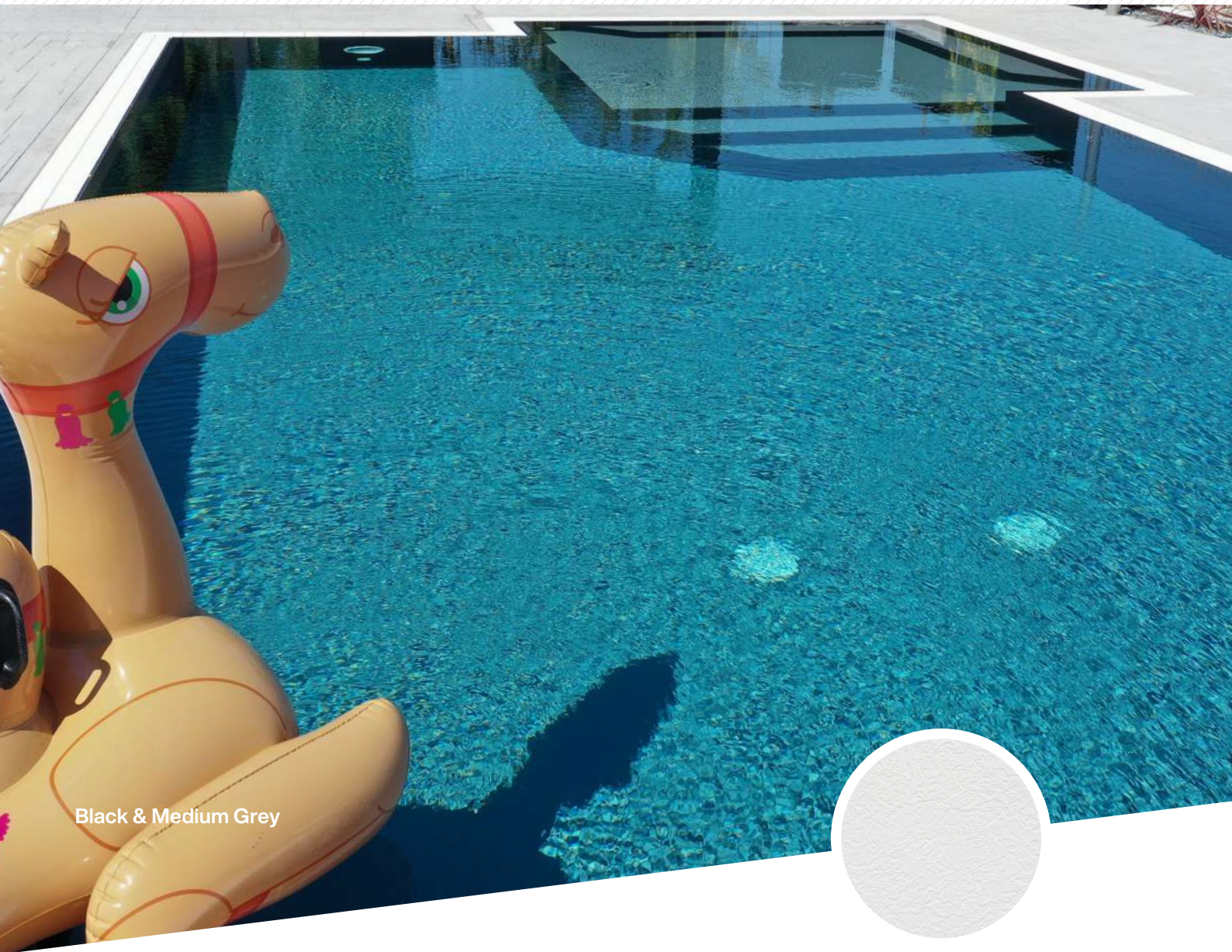
Premium warranty

WARRANTY
12 years
WATERPROOFING

&

WARRANTY
3 years
STAINS*

* Stains caused by bacteria.



Black & Medium Grey



EMBOSSING

Code for GRIP membranes: 237747



Light Blue
156967/CA



Azure Blue
156967/AB



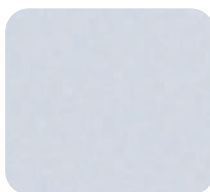
Dark Blue
156967/DB



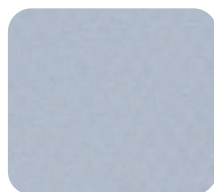
Wild Musk
156967/VM



Sand
156967/SA



White
156967/HB



Light Grey
156967/GC



Medium Grey
156967/GM



Basalt Grey
156967/GA



Black
156967/NB

SOPREMAPOOL ONE



Product advantages



Flexible.



Smooth.



Intense and multiple colours.

Natural Green



150/100 reinforced membranes

PVC reinforced membranes of 1.5 mm manufactured by cast process. High resistance to weatherings, UV rays and microorganisms.



Characteristics

▪ **Dimensions:** Roll of 1.65 x 25 m.



GRIP (non-slip version)

All colours are available in the non-slip version.

▪ **GRIP dimensions:** Roll of 1.65 x 10 m.

▪ **Regulation:** SOPREMAPOOL GRIP has been [tested for slip prevention](#) according to the European standard EN 13451-1 (according to annex B of EN 15836-2) and DIN 51097 (1992).

C
Slipperiness
certificate

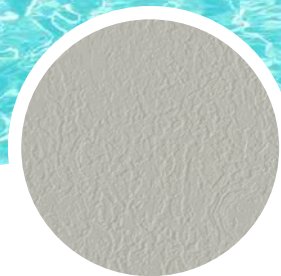


One warranty

WARRANTY
10 years
WATERPROOFING



Sand



EMBOSSING

Code for GRIP membranes: 237747



Light Blue
156966/CA



Azure Blue
156966/AB



Sapphire Blue
156966/BS



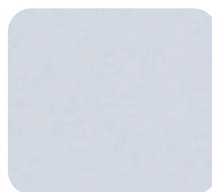
Caribbean Green
156966/VC



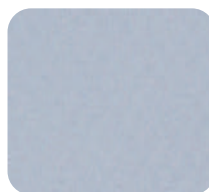
Natural Green
156966/VG



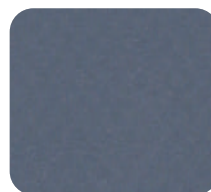
Sand
156966/SA



White
156966/HB



Light Grey
156966/GC



Medium Grey
156966/GM



Basalt Grey
156966/GA

Complements & Accessories



SOPREMAPOOL MAGIC

Code	Description	Content
234511	Magic sponge for waterline cleaning without chemicals. Suitable for any type of swimming pool coating. Also recommended for cleaning any pool accessory.	Display with 24 boxes. Each box contains 2 XL sponges.

PVC LIQUID



Code	Description	Colours	Content
156992	Liquid PVC for liner covering in-ground pools.	Transparent, Light Blue, Azure Blue, Sapphire Blue, Dark Blue, Caribbean Green, Natural Green, Wild Musk, Sand, White (to be applied on colours/designs White, Marbella, Mosaic Blue, Sky Blue, Sensitive White and Sensitive White Wood), Light Grey, Medium Grey (to be applied on colours/designs Medium Grey, Bali, Sensitive Bali and Sensitive Bali XL), Basalt Grey (to be applied on colours/designs Basalt Grey and Sensitive Grey), Black (to be applied on colours/designs Black, Sensitive Black and Pearl Black), Sensitive Sand, Bali Sand, Wood, Sensitive Sahara, Sensitive Ocean, Sensitive Infinite + Rock, Sensitive Vanilla.	1 L.



ALSAN BOND POOL SP

Code	Description	Content
152890	Alsan Bond POOL SP is a fast-drying sprayable solvent-based adhesive for bonding the geotextile to the pool support prior to liner installation. It is suitable for indoor and outdoor applications.	500 ml. Box with 12 units.



ALSAN BOND POOL 410

Code	Description	Content
159005	Cold contact glue for single and double gluing the reinforced membrane to the pool structure at specific points.	5 L.



SOPREMAPOOL TEX 350 PP

Code	Description	Dimensions
00255972	100% recycled polypropylene non-woven geotextile, 350 g/m².	2 x 25 m.
00267527		1.5 x 25 m.



FLAT PVC METAL STRIP

Code	Description	Dimensions	Content
51344	Profile to weld the reinforced membrane on the vertical walls.	2 m x 0.05 m.	Pack of 10 units.



ANGLE PVC METAL STRIP

Code	Description	Dimensions	Content
159821	Profile to fix the reinforced membrane in new-build or refurbished pools where there is a raised coping.	2 m x 0.05 m x 0.05 m	Pack of 10 units.



HUNG ALUMINIUM PROFILE

Code	Description	Dimensions	Content
159761	Profile to anchor the reinforced membrane, especially suitable for new-build pools.	2 m x 0.05 m.	Pack of 10 units.



PVC CORD

Code	Description	Dimensions	Content
158498	Cord to weld the edge of the reinforced membrane to attach it to the profile.	25 m x 9 mm (every unit).	Pack of 5 units.



PVC BORDER

Code	Description	Colours	Content
107237	PVC strip to close the anchoring profile.	White, Medium Grey, Dark Grey, Light Blue and Sand.	30 m.



EXPANSION NAILS

Code	Description	Dimensions	Content
159762	Expansion nails for fixing.	4.8 ø x 25 mm.	100 Units.



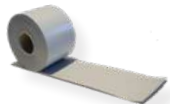
LIQUID PVC APPLICATOR

Code	Description
159156	Applicator for the liquid PVC.



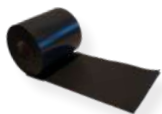
SANITARY

Code	Description	Content
151757	Product to clean and disinfect the pool structure. Procedure prior to the installation of the reinforced membrane that prevents the proliferation of microorganisms between the soil and the membrane.	250ml. 2.5% solution.



WELDING STRIP

Code	Description	Dimensions
157622	Welding strip to install Soprema 3D membranes (butt welding).	25 m x 0.15 m.



PVC MARKING STRIP

Code	Description	Dimensions
220276	Strip for the separation of the swimming lanes.	25 m x 0.25 m.



CTP1 SOPREMAPOOL TROLLEY

Code	Description	Dimensions
00261706	Telescopic trolley to easily handling and unrolling SOPREMAPOOL membrane.	64 x 114 x 30 cm (folded).
		64 x 191 x 30 cm (unfolded).



LEISTER POOL KIT

Description
Complete kit of tools for the installation of synthetic membranes in swimming pools: Heat gun TRIAC AT 1600W (Digital, Eco mode), Heating element 1600 W, Wide slot nozzles 20 mm, Tubular Nozzles, Speed welding nozzles, Brushes, Pressure roller 40 mm silicone, Pressure roller 28 mm silicone, Pressure roller brass, Scissors, Contour scraper, Stanley Knife, Tape measure, Storage box.

Pool training



Courses specially designed for swimming pool installers

At **SOPREMA** we are committed to making the sector more professional. This is why we invest in training swimming pool installers.

Our goal is to offer specialised courses tailored to the professional's needs and experience. Our aim is to share the Soprema Group's knowhow in synthetic waterproofing with reinforced membranes.



Professional purpose

Our courses are designed by our trainers and technical managers to deliver the most up-to-date techniques in line with current regulations and following best practice.

They are arranged in independent units, making it easier to specialise in learning and providing flexibility for the student. All **SOPREMAPOOL** products are taught so that students can easily apply them.

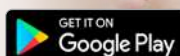
Digital Tools



SopremaPool

The ultimate app for your pool waterproofing projects

The **SOPREMAPOOL** app will help you with all your swimming pool waterproofing projects. You'll be able to view our entire range easily and immediately, see the outcome of each model submerged in water and also access all the documentation and installation methods. And of course, the amazing and popular digital pool configurator!



Create the pool of your dreams



SopremaPool AR

Are you thinking in building a pool in your garden, terrace or patio?

Simulate the final look of your pool in Augmented Reality with the new **SOPREMAPOOL AR** app!

Enter the dimensions of the pool you would like to build, place it in the suitable location, choose the design and colour of the **SOPREMAPOOL** membrane that you like the most and see the final result in real time, with water and without water!

Simulate your **SOPREMAPOOL** pool in augmented reality

Coming soon



Scan the code and discover each **SOPREMAPOOL** membrane submerged in water.



SOPREMAPOOL



SOPREMA at your service

Looking for a business partner?

Got a technical question about installing our products?



Contact our **SOPREMAPOOL** department
sopremapool@soprema.com
www.sopremapool.com

Want to keep up to date with all our news and product releases?

