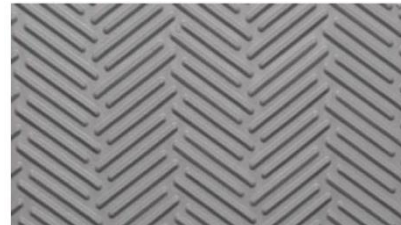


FLAGON PVC Walkway Supergrip

Description

Membrane composed of flexible PVC.
Used as an anti-slip finish.
The membrane is distinguished by a very high resistance to weathering and UV-rays.
The top has a herringbone embossed surface.



Characteristics

Composition	Standard	Unit	Value	Tolerance
Material			flexible PVC	
Finish upper side			herringbone embossed surface	
Colour			grey	
Technical characteristics				
Membrane thickness	ASTM D 412	mm	3,9	± 2,5 %
Tear resistance	ASTM D 624	kN/m	± 43,8	
Elongation	ASTM D 412	%	± 200	
Dimensional stability	ASTM D 1204	%	0	± 0,5
Accelerated weathering	ASTM G 155	kJ/m ²	± 10080	
Pendulum test (slip resistance)	BS 7976-2 104/40.2		84/46	
Ramp test (anti-slip)	DIN 51130 R10		R9	
Reaction to fire	EN 13501-1	class	E	
Packing				
Dimensions of the roll		m	≥ 15 x 0,76	
Mass/roll		kg	± 56,7	

NPD = no performance determined

Installation

Applied as walkway on flexible PVC waterproofing systems.
Welded with hot air.
The membrane is applied in conjunction with accessories from Flag.

Special indications

Hygiene, Health and Environment

The product does not contain any substance which is likely to be detrimental to your health or to the environment and complies with generally admitted Health and Safety Requirements.

Quality-, Environment- and Safety Management

SOPREMA always recognises as a high level of importance the quality of the products, the environment and safety. For this reason, we operate independently monitored Quality and Environment Assurance Systems in line with **EN ISO 9001** and **EN ISO 14001**.