



**BITUMINOUS**  
WATERPROOFING

# SOPRALENE





# SOPRALENE

An aerial photograph of a city street corner. The left side of the image is covered by a semi-transparent blue overlay. On the right, a multi-story building with a flat roof is visible, featuring a large array of solar panels on one section. The building has yellow and orange facade elements. A street with a red-paved intersection and a 'KEEP CLEAR' marking is visible in the foreground. Other buildings and parked cars are visible in the background.

## AN INTRODUCTION

Expertly blended SBS bitumen membranes, that provide superior resistance and water-proofing longevity for roofing applications.









## SOPRALENE

# BITUMINOUS WATERPROOFING



### WATERPROOFING EXPERTISE

Worldwide leader in the field of waterproofing and insulation systems, SOPREMA is recognised for high quality products and technical expertise.

For over 100 Years, SOPREMA has been known for its utilisation of advanced research and development capabilities that do not follow trends, but set the mark for the competition to follow.

The Sopralene range of bituminous membranes includes a complete offering of primers, vapour barriers, underlayers, capping sheets and accessories, providing high performance solutions for new build and refurbishment roofing applications.

### GUARANTEED LONGEVITY

Today's membranes boast exceptional performance in terms of strength, reliability and service life. Sopralene waterproofing systems are composed of expertly blended SBS elastomeric bitumen and high resistance reinforcements that guarantee longevity.

In addition to their superior physical characteristics, Sopralene bituminous systems complement all forms of architecture, through new technology and countless finishes.

### CERTIFICATION

Sopralene bituminous waterproofing systems are BBA certified and FM approved. Sopralene membranes are manufactured according to the principles of sustainable construction, respecting the environment, human resources and the economy.



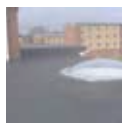


## ADVANTAGES

- + **Exceptional dimensional stability**
- + **Resistant to ageing**
- + **High puncture resistance**
- + **Low temperature application**
- + **Aesthetic finish**

## SOPRACOVER WARRANTY

Sopralene waterproofing systems are covered by the Sopracover warranty, the term of the warranty is determined by the system specified. All SOPREMA products are installed by approved contractors to ensure a consistent standard of workmanship. There are no minimum surface area or project value requirements to qualify for the Sopracover warranty.



## TECHNICAL SERVICE

Technical expertise is a key strength of SOPREMA, technical experts are available to assist you from design right through installation, providing the following services:

- » Surveys, core samples and condition reports
- » Design consultations and advice for new build projects
- » Standard details and CAD drawings
- » Educational seminars
- » Detailed project specifications
- » Interim and completion site inspections



# SOPRALENE APPLICATIONS



## HIGH PERFORMANCE

SOPREMA has long been the manufacturer of choice for waterproofing membranes, based on high quality SBS modified bitumen, in the highly competitive waterproofing market. Over 100 years of experience in the field of elastomeric bitumen led SOPREMA to the development of the Sopralene systems.

## INSTALLATION

Sopralene multi-layer waterproofing systems can be torch applied and single layer overlay systems can be cold bonded using a flame-free adhesive application. Self-adhesive membranes are also available for situations where an alternative to torch bonding is required.

The polymer quality ensures ease of installation even in extreme weather conditions: Even at sub zero temperatures, Sopralene membranes remain flexible and easy to install.

## ADVANTAGES

Sopralene bituminous waterproofing systems are suitable for new build and refurbishment projects, providing waterproofing protection even in tough environmental conditions.

A wide range of systems are available to suit all projects. Bespoke and hybrid systems can be specified to achieve specialist and complex project requirements.

- + **Optimum adhesion**
- + **Guaranteed longevity**
- + **Easy to install**
- + **Superior technical performance**
- + **Elastic and flexible**





## FLAT ROOFS



Fully reinforced bituminous waterproofing systems designed for flat roofing applications



## BARRELL & DOME ROOFS



Fully reinforced bituminous waterproofing systems for barrel and dome structures



## BALLASTED ROOFS



Fully reinforced bituminous waterproofing systems designed for ballasted and inverted roofs



## GREEN ROOFS



Fully reinforced, root resistant waterproofing systems for green roof applications



## COMPLEX PROFILE ROOFS



Fully reinforced, flexible bituminous waterproofing systems for projects with complex profiles and details.



## SOPRALENE EXAMPLE SYSTEMS



### BESPOKE SYSTEMS FOR YOUR PROJECT

SOPREMA offers a vast range of bituminous waterproofing systems and finishes, the systems that are displayed on these pages are indicative of typical system build ups that are specified for roofing projects. For a bespoke system recommendation that meets the individual requirements of your project, please contact SOPREMA. Contact details can be found on the back cover of this document.

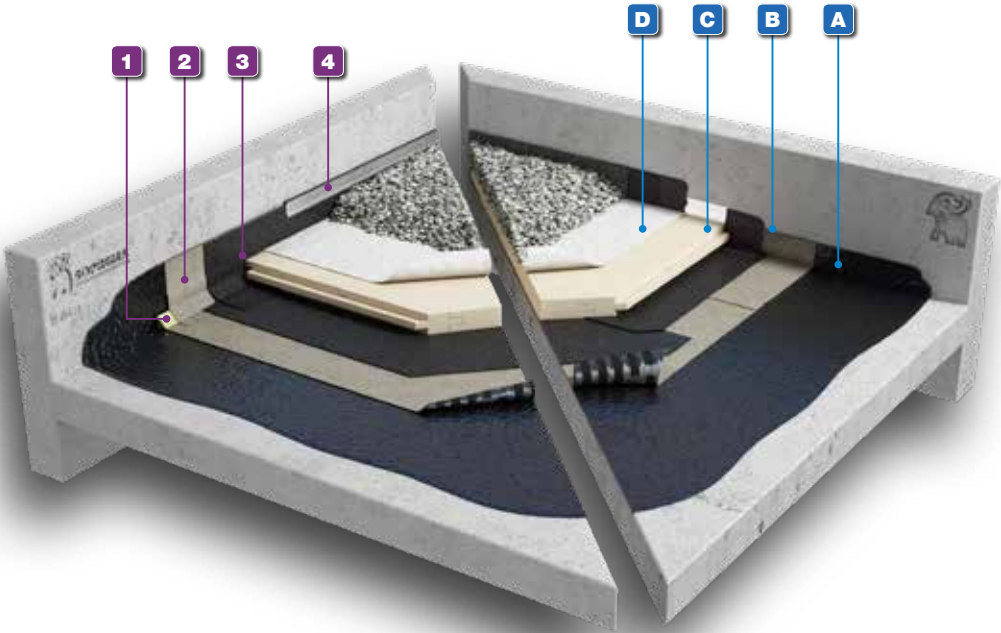


### ACCESSORIES

A full range of Sopralene compatible accessories including outlets and leaf guards, are available from SOPREMA and covered by the single-point Sopracover warranty.

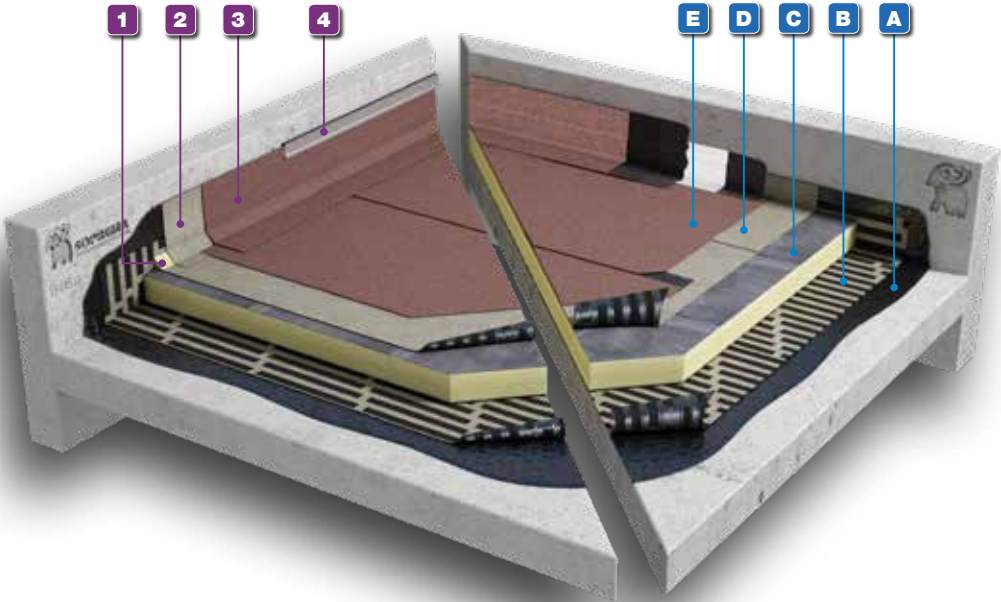






SOPRALENE INVERTED SYSTEM TORCH APPLIED INSTALLATION

A	B	C	D	1	2	3	4
PRIMER	VAPOUR LAYER	WATERPROOFING CAPSHEET	INSULATION	ANGLE FILLET	WATERPROOFING CAPSHEET	CAPSHEET	TERMINATION BAR



EXAMPLE WARM ROOF SYSTEM TORCH APPLIED INSTALLATION

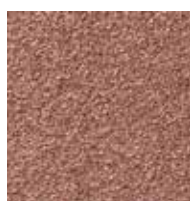
A	B	C	D	E	1	2	3	4
PRIMER	VAPOUR LAYER	INSULATION	VENTED UNDERLAYER	WATERPROOFING CAPSHEET	ANGLE FILLET	UNDERLAYER	WATERPROOFING CAPSHEET	TERMINATION BAR

# SOPRALENE

## COLOURS & FINISHES

The Sopralene bituminous waterproofing range offers flexible design through a wide range of colours and finishes. The Sopralene waterproofing capsheets are available with varied finishes, to suit specific aesthetic requirements. Alongside these aesthetic options, SOPREMA also offer green roof systems and ancillary components for ballasted or paved roof finishes, enabling designers to create a functional roof space.

### CAPSHEET COLOURS



BRUN FLAMME



GREY



BLACK



WHITE



GREEN



### SOPREMA GREEN ROOF SOLUTIONS

Green roofs are the perfect way to create sustainable building envelope solutions, promoting biodiversity and turning what would otherwise be wasted space into useful areas for people, wildlife and plants. SOPREMA supply a wide range of green roof systems, to suit every structure. Full design and specification advice is available to assist you with your project.

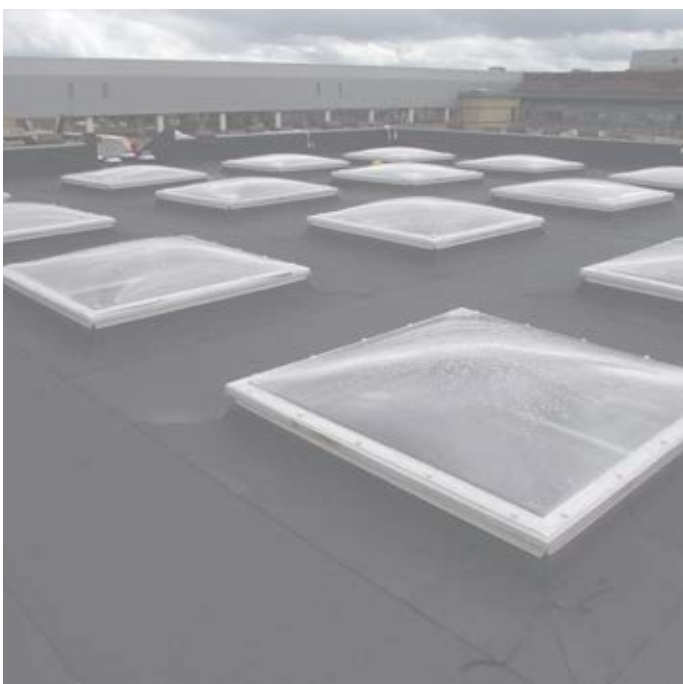
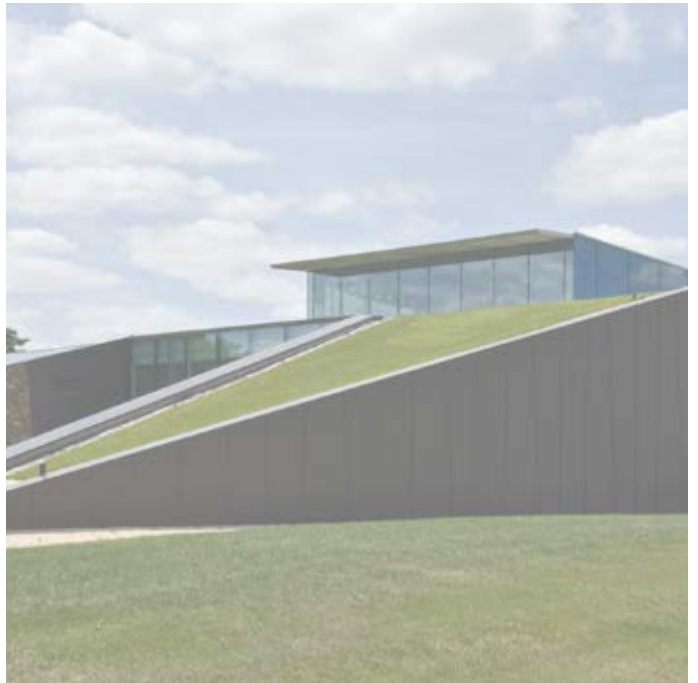
- + Reduce storm water run off
- + Promote biodiversity
- + Easy to install



#### PAVED FINISHES

Sopraplots are available from SOPREMA, providing a solution for paved finishes without compromising the integrity of the waterproofing system.





**SOPREMA** at your service:

Do you have a question about a specific project, the products or application possibilities? Then contact our technical team.

All information can be found on:  
**[www.soprema.co.uk](http://www.soprema.co.uk)**

**SOPREMA UK**

SOPREMA House  
Freebournes Road  
Witham, Essex, CM8 3UN

Tel : 0330 058 0668  
[info@soprema.co.uk](mailto:info@soprema.co.uk)  
[www.soprema.co.uk](http://www.soprema.co.uk)

