

UniverCell® Confort Sopra® Star
Soprasolar® Fix Efigreen Alu
Mammouth® Neo Toundra'Box
TMS® Retentio®

New products & services 2011



SOPREMA
GROUP



Dear Sir, Madam,

I am pleased to present our newest product offerings to you, the result of the constant efforts of our R&D teams at **SOPREMA** to meet the market's growing expectations in environmental quality.

Enjoy reading it!

Pierre-Etienne Bindschedler
Chairman of the Board, **SOPREMA**

SOPREMA



SOPREMA, A SUCCESSFUL APPROACH!

Producing materials that meet the immediate expectations of Project Owners while preserving the environment for future generations: these are the challenges that participants in the construction industry must now face.

It is the duty of manufacturers of materials today, to consider the impact of their products and their activities on the environment and on people throughout the lifespan of a structure, starting with its construction through its operation then ending with its demolition.

SOPREMA'S OWN "ECO STRUCTION" LABEL, A STRONG FOCUS SINCE 2002

SOPREMA, worldwide waterproofing specialist, has created the "Eco struction" label to designate products and services specifically designed to meet the company's proactive approach to sustainable development.

It is a key visual identification when it comes to meeting environmental criteria as part of an HQE ("High Environmental Quality") project. **SOPREMA's** R&D policy, which strongly supports sustainable development, is focused on limiting its environmental impact, with the use of renewable resources in its production processes and in its factories, while fully integrating health and safety into its innovation policy. **SOPREMA** has always considered the safety of people, installations and buildings a top priority.

CONTENTS



Mammouth® Neo
4-5



Sopra® Star
6-7



Soprasolar® Fix
8-9

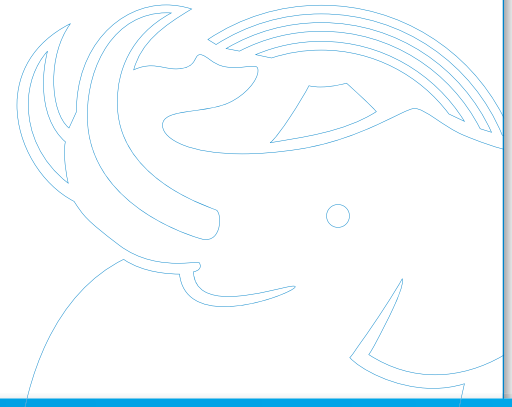


Copper Art &
Silver Art® 10-11



Efigreen Alu
12-13

natural construction materials



Retentio®
14-15



Vivagreen®
16-17



Toundra'Box
18-19



Sopradalle Ceram
20-21



UniverCell® Confort
Loose-fill 22-23



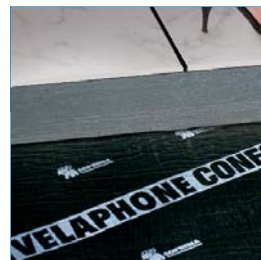
UniverCell® Confort
Panels 24-25



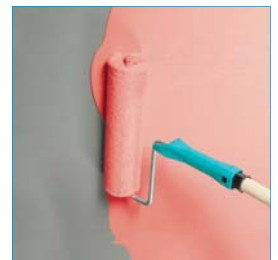
Roofing &
airtightness 26-27



TMS®
28-29



Velaphone® range
30-31



Alsan® 410
32-33



Product catalog
34-35



Prescripto
36



Soprema.com
37



MySoprema
ToolBox 38



Documentation
39

revolutionary

durable,
sustainable
and easy to use

mammouth® neo

Performance
Durability

Biosourced
Product

Easy to install

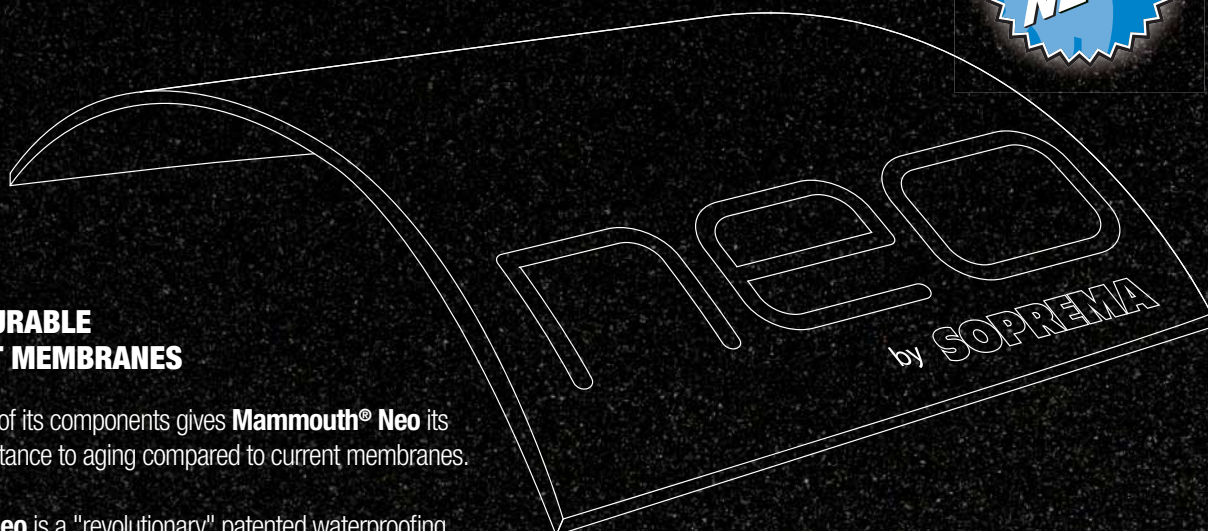




TWICE AS DURABLE AS CURRENT MEMBRANES

The high quality of its components gives **Mammouth® Neo** its exceptional resistance to aging compared to current membranes.

Mammouth® Neo is a "revolutionary" patented waterproofing system, durable and attractive.



A NEW HIGH TECH BIOSOURCED MATERIAL

A product of **SOPREMA'S** ecodesign approach, the **Mammouth® Neo** system is the culmination of 10 years of Research and Development.

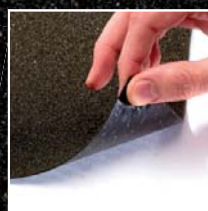
Mammouth® Neo's key ingredient is a revolutionary new material: an innovative and environmentally friendly elastomer, inspired by **Alsan® Flashing®** technology, and made from organically sourced raw materials, derived from European-produced rapeseed oil.

Thanks to this waterproofing concept, **consumption of non-renewable fossil resources is reduced by 60%, limiting the membrane's carbon footprint.**



A TECHNICAL MEMBRANE, LIGHTWEIGHT AND EASY-TO-INSTALL

This new concept: A revolution in the way we work! Easier to install, while maintaining the highest quality. With its extraordinary technology-filled binder, **Mammouth® Neo** is at the same time high performing, ultra-thin and ultra-lightweight (25 kg for a 10 m long roll). Since it's so lightweight, **Mammouth® Neo** contributes considerably to improving the ergonomics of the building trades.



mammouth neo
born to last
by SOPREMA

SOPRA® STAR, THE NEW MEMBRANE THAT COMBATS THE URBAN HEAT ISLAND EFFECT!

Intended for new construction or renovation work, **Sopra® Star** is a waterproofing membrane coated with a four-layer **Valeron®** surface film.



Sopra® Star bears the **Energy Star®** label.

EXTREME STRENGTH & REMARKABLE FINISH

- + **Sopra® Star** resists pollution, but also extreme weather conditions, including temperatures ranging from -20°C to + 100°C!
- + At very low temperatures, **Sopra® Star** remains flexible and not subject to cracking.
- + The membrane's static puncture resistance L4 (36 kg) is one of the highest on the market.
- + Its white lacquered coating is UV-resistant, will not yellow and retains its reflective qualities for years.
- + Furthermore, **Sopra® Star** has an original, shiny, embossed and lacquered white surface that makes it more attractive and guarantees its resistance to dirt.

sopra® star





advantages

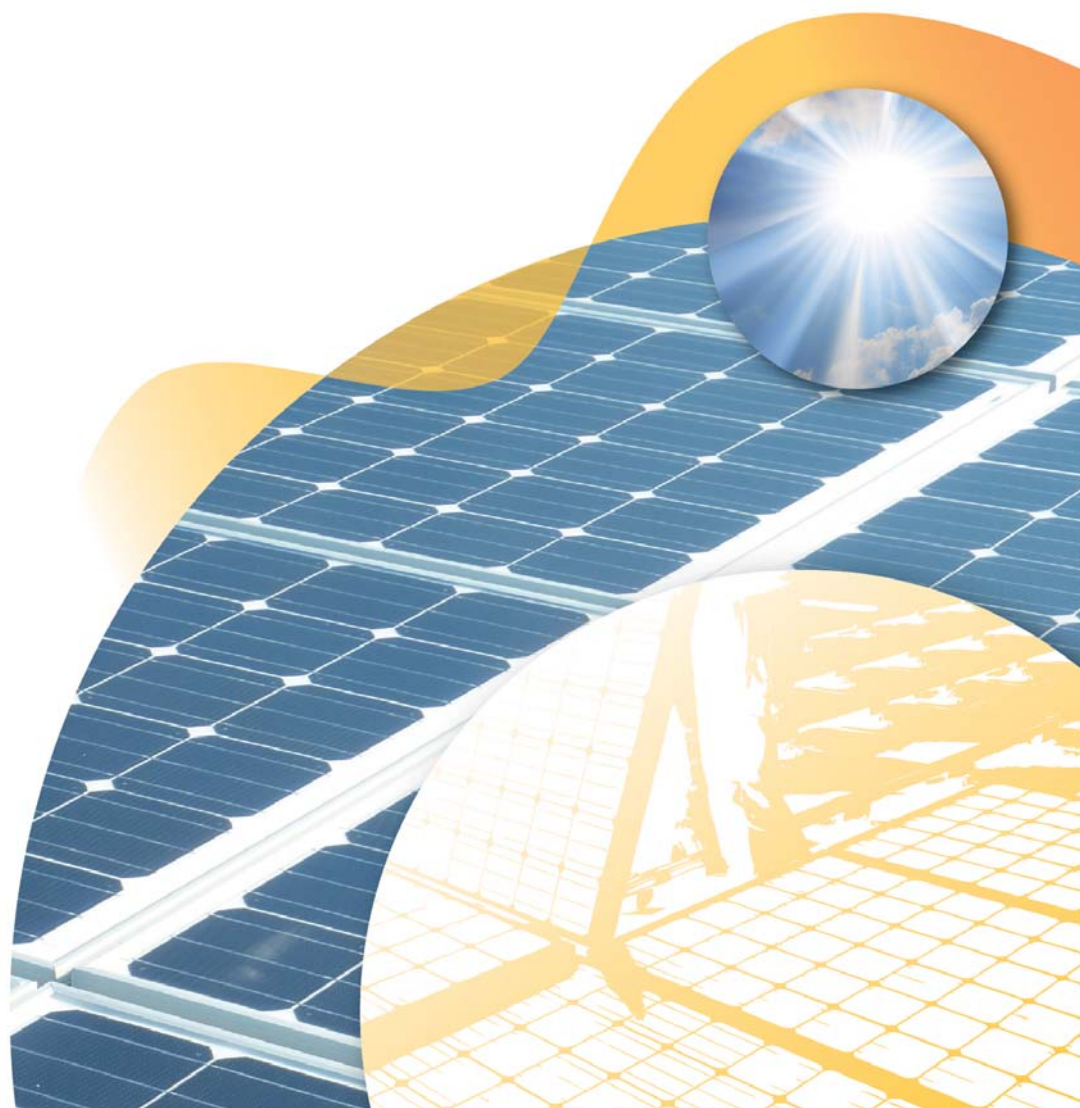
- + High solar reflectance of 0.78.
- + Emissivity = 0.89.
- + Compliant with the "Cool Roof" approach.
- + B roof T3 fire protection suitable for public access buildings.

OUR ROOF HAS ENERGY TO SPARE

- + **Soprasolar® Fix** has been specially designed to integrate rigid modules over a bilayer or single bituminous membrane with a Technical Approval (from the **SOPREMA** range), without piercing the waterproofing membrane.
- + **Soprasolar® Fix** is ideal for all roofs exposed to solar radiation
- + Official distributor for 2010 of **SMA Solar Technology AG**, world leader in solar inverters, using **SOLARDIS** means easier project implementation.
- + By offering the entire range of **SMA** solar inverters, the **SOLARDIS** electricity division is capable of providing you with the ideal economic and technical solution for all your projects



soprasolar® fix





SOPRASOLAR® FIX, THE ADAPTABLE SOLUTION

With the **Soprasolar® Fix** process, available with an aluminium finish or in hot-dip galvanised steel, rigid modules can be installed in any type of wind zone (max. zone 4), snow zone (max. Ce2 zone), in the vicinity of saline environments, and regardless of the module technology selected.

advantages

- + **Waterproofing membrane: with a 20-year SOPREMA warranty.**
- + **Unbeatable price-quality ratio.**
- + **80% guaranteed power output from the module.**

NEW SOLUTIONS FOR MORE CREATIVE ARCHITECTURAL DESIGN

To encourage innovative creation and allow the imagination to run free, to create state-of-the-art membranes utilizing materials and processes free of limits: these are the goals of architects and designers of today.

In response to this creative thirst **FLAG®**, one of the **SOPREMA** group's brands, proposes innovative solutions capable not only of meeting these architectural ambitions, but also the many and varied technical constraints of the market.

COPPER
art

SILVER
art

APPLICATION/USE

- + The same as traditional waterproofing.
- + Adapts to all types of substrates.

copper art®
& silver art®





advantages

- + Flexible and adaptable to the most daring designs
- + Unbeatable price-quality ratio.
- + Allows for great freedom of style and design.

POLYURETHANE THERMAL INSULATION INSTALLED UNDER THE WATERPROOFING ON FLAT ROOFS WITH SELF-PROTECTED SEMI-LOOSE COATINGS

- + **Efigreen Alu** is designed for the insulation of new or renovated flat roofs.

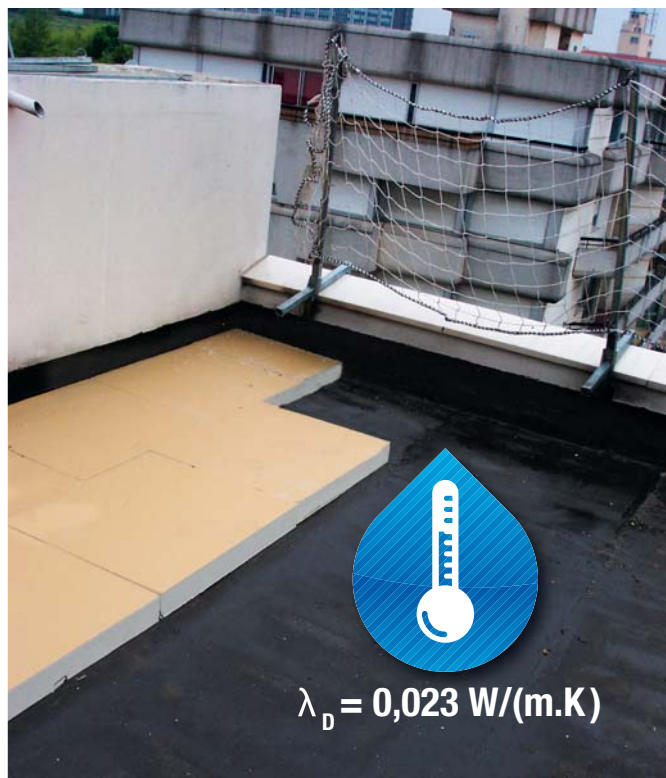
APPLICATION/USE

- + It can be used on non-accessible, technical flat roofs (including aerial work platform runways), garden roofs and flat green roofs, in plain or mountain climates.



efigreen alu





advantages

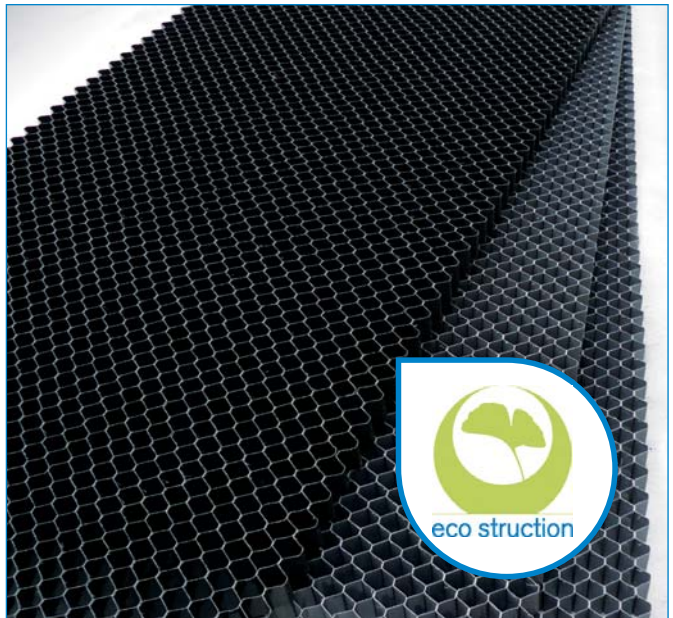
- + Excellent dimensional stability, for long-lasting insulating capacity.
- + High mechanical strength ($R_c > 200 \text{ kPa}$).
- + Excellent insulating capacity.
- + Unequalled thermal performance.

RAINWATER MANAGEMENT AND TEMPORARY RETENTION

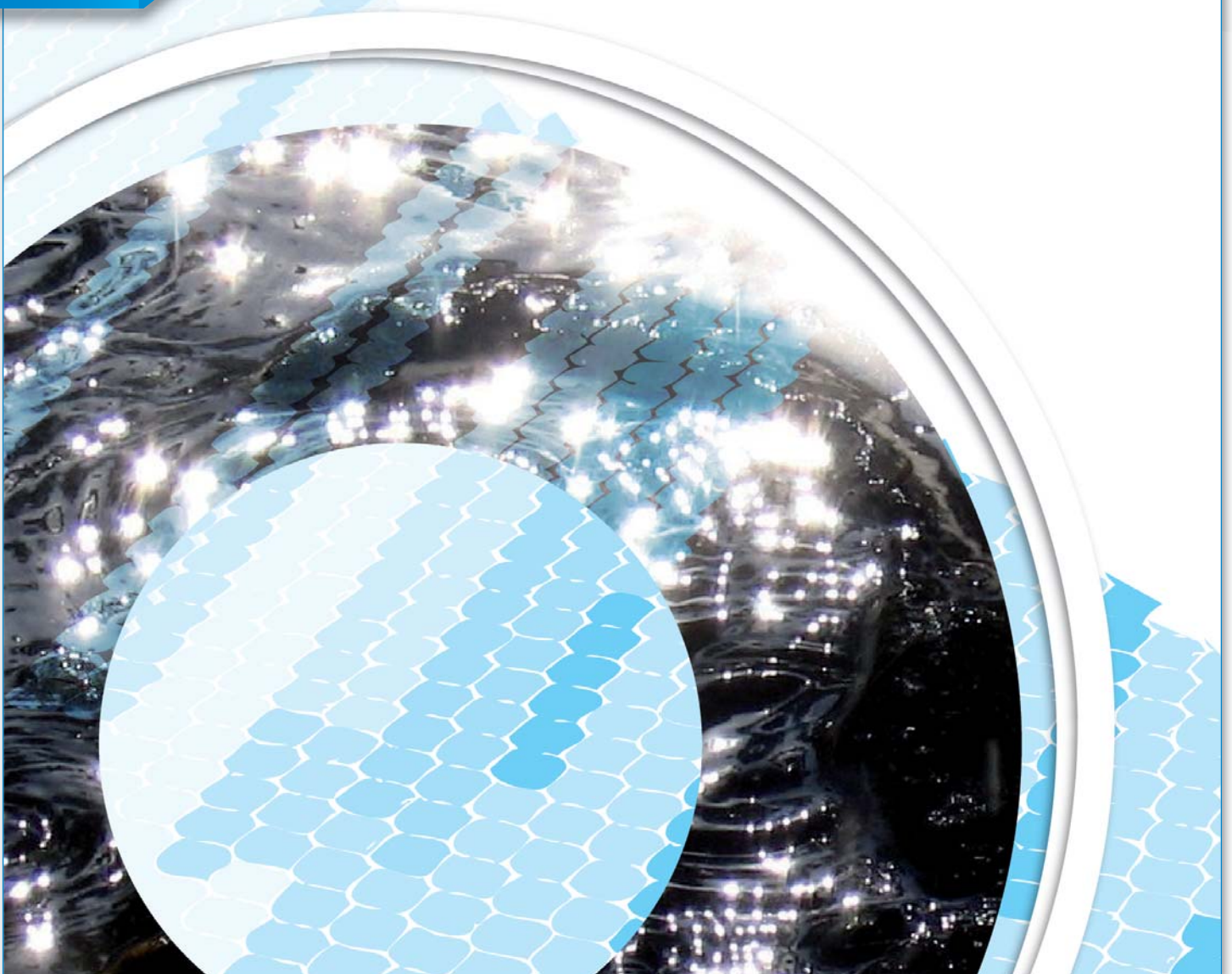
- + Temporary rainwater retention system including a geocomposite drain and an ultralight cellular-structure module.
- + In line with integrated rainwater management policies: the "Water Law" of 2006.
- + **Retentio®** surfaces collect and regulate water better than nature could.

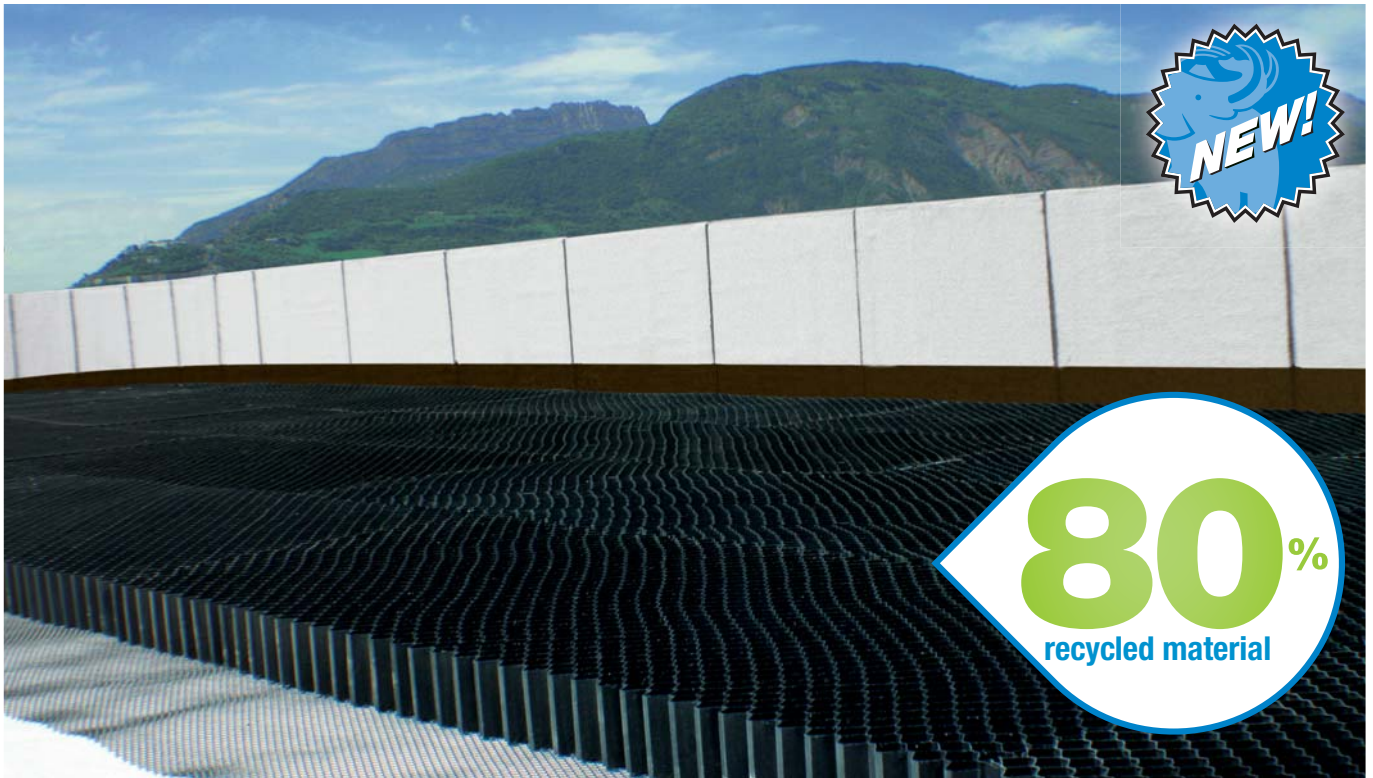
APPLICATION/USE

- + On flat roofs, both in new construction and renovations.
- + Roofs concerned: non-accessible, technical, garden, accessible to pedestrians, light and heavy vehicles.



retentio®





advantages

- + Very high compression strength.
- + Reversible modules.
- + Wide range of thicknesses available.

VIVAGREEN®: THE GREEN REVOLUTION REACHES WALLS

Sopranature® now offers a new breathing thermal shield, to decorate and protect walls. **Vivagreen®** combines design and ecology to improve city living.

With **Vivagreen®**, **Sopranature®** can cover all walls!

Vivagreen® consists of 3 components:

- + A metal structure attached to the wall.
- + Aluminium boxes filled with a growing medium and plants (sedums, succulent plants, small flowering perennials) which immediately provide good green coverage.
- + A drip pipe irrigation system.

VIVAGREEN®: FOR CITIES THAT BREATHE

- + Numerous studies have proved it: plants help cleanse polluted air. This bio-purification is linked to photosynthesis and root absorption. Plants also cleanse the air by capturing dust.
- + Breathing also means relaxing: the positive impact of vegetation on people is particularly precious in cities. Provides a fresh, soothing atmosphere that contributes to city dwellers' well-being.
- + Helps regulate temperatures in the cities while protecting facades against solar radiation: it acts as a genuine natural thermal barrier!

vivagreen®





advantages

- + System with Sow (Statements of works).
- + Vivagreen® is a very easy to install modular system. It can be integrated in a cladding lot right from the design stage.
- + Compatible with external insulation.
- + Attractive surface right after installation.
- + Low water consumption for a green wall system.
- + Diverse range of plants offered.

A CONCEPT BASED ON EXCELLENCE

The appearance of the **Toundra'Box** is an essential feature. Its removable sides mean the outline of the box disappears once it is installed. The results are impeccable:

- + Instant, uniform green roof, with no delay.
- + The removable sides protect the plants against crushing during transport.
- + Added ecological bonus: the sides can be re-used!

TECHNICAL CHARACTERISTICS

- + **All climates**
(regular watering required in Mediterranean regions).
- + **Exposure:** full sun to half-shade.
- + **Indicative weight** the complex at saturated capacity: 90 kg/m².
- + **Thickness** of the complex on average: 8 cm.
- + **Plant height:** 10 to 15 cm.
- + **Maintenance:** 3 times in the first year, 1 to 2 the following years.
- + **Runoff coefficient**
(according to German professional regulations): 0.5.
- + **Maximum Water Capacity:** 20 to 25 liters /m².
- + **Temporary water retention:** water depth 40 mm, or 40 liters/m².

toundra'box





THE SOPRANATURE® TOUNDRA'BOX IS A NEW, MODULAR GREEN ROOFING SOLUTION

- + Lightweight, ergonomic pre-planted boxes.
- + **Toundra** plants, mainly **Sedums** with changing colours and spectacular blooms from May to September.
- + **Toundra'Box** are placed directly on top of the waterproofing.



advantages

- + Roof is covered with vegetation as of installation.
- + Visual and planting continuity thanks to the boxes with removable sides, which eliminate the "checkered" effect commonly seen on green roofs.
- + Temporary water retention function (concrete substrates): Toundra'Box slows the rejection of rainwater into the drains during heavy rainfall.
- + Suitable for sloping roofs.
- + Available in different floral compositions.
- + Very easy and quick handling and installation: 4 operations in one!
- + Simply placing boxes side by side means no need for clips: another advantage!

- + **Sopradalle Ceram** is a monolithic ceramic stoneware slab, 20 mm thick, measuring 60 x 60 cm, coloured through.
- + **Sopradalle Ceram** is perfectly squared and machined, with rounded edges and a non-slip surface for outdoor use.
- + **Sopradalle Ceram** is highly resistant to freezing, thermal shock and breaking.

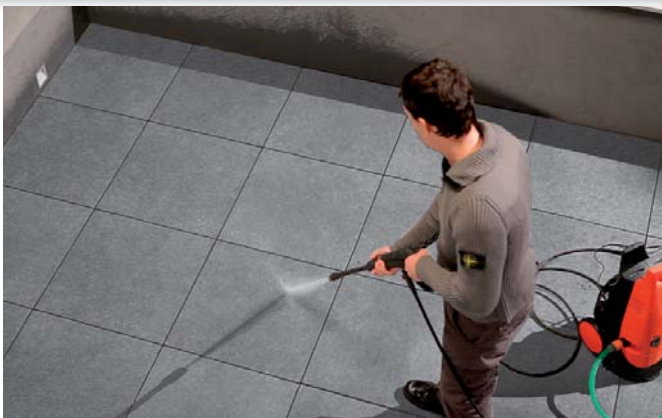
APPLICATION/USE

- + Easy to lay, either on pedestals or directly on any kind of substrate.



sopradalle ceram

MECHANICAL
T11
RESISTANCE



COLOURS



advantages

- + Resistance to extreme temperatures (-50°C to +60°C).
- + Easy to clean (even using a high pressure washer).
- + Removable and reusable.

UNIVERCELL® CONFORT LOOSE-FILL

High-performance thermal and sound insulation, **UniverCell® Confort Loose-fill** comes in the form of cellulose fibres, made from recycled paper, sorted and ground, then treated to resist fire and mildew.

+ with no boron salt.

+ **UniverCell® Confort Loose-fill** is a versatile product suited to all application methods.

+ Because of the variety of application methods (air , air injection or wet spraying), **UniverCell® Confort Loose-fill** can be used not only to insulate unconverted and unused roof spaces, but also for the thermo-acoustic insulation of walls, floors and roof slopes.

UniverCell® Confort Vrac

UNIVERCELL® CONFORT LOOSE-FILL

BORON
SALT-FREE

TECHNICAL APPROVALS





CELLULOSE WADDING FOR NATURAL THERMAL AND SOUND INSULATION

Today **UniverCell® Confort Loose-fill** is the 1st and only cellulose wadding without boron salt and with Technical Approval of the CSTB*

Its application methods (air, air injection, and wet spraying) make it adaptable to the constraints of any type of job.

**(French scientific and technical center for the building industry).*

advantages

- + 1st and only loose-fill cellulose wadding without boron salt and benefitting from a Technical Approvals of the CSTB*.
- + Quick and easy application.
- + Long-lasting thermal performance (limited settling).

UNIVERCELL® CONFORT PANELS

Cellulose wadding **UniverCell® Confort Panels** are natural thermal and acoustic insulation products suitable for use on walls, ceilings, roof slopes and partition walls, a useful addition to **SOPREMA's** insulation range. These panels are the perfect solution for an environmentally friendly "BBC" (low consumption building) house.

+ **UniverCell® Confort Panels** come in 6 thicknesses:
45, 60, 80, 100, 120 and 140 mm.

UniverCell® Confort Panels

© Timbes frames houses - La Pessière.
Company - www.la-pessiere.fr



UNIVERCELL® CONFORT
**BORON
SALT-FREE**
UNIVERCELL® CONFORT



UNIVERCELL® CONFORT PANELS

Semi-rigid panels **UniverCell® Confort** are particularly useful for acoustic partition walls, for roof slopes, ceilings and thermal wall linings.

advantages

- + Easy to cut.
- + Very flexible panels, with no risk of breaking on bending.
- + 100% French made.
- + Environmentally friendly.

UniverCell
by **SOPREMA**

AIRTIGHTNESS: A NEW ENERGY PRIORITY!

- + The French thermal regulation RT 2012 has come out. It will apply to residential buildings, for all building permits applied for after 1 January 2013.
- + It corresponds to the current "BBC" (low consumption building) requirements contained in the RT 2005, plus systematic measuring of air permeability.
- + One of the keys to successful construction for low energy consumption is airtightness, which now represents a large portion of the possible margin for improvement in terms of energy savings.

INNOVATIVE SOLUTIONS FOR ALL TYPES OF ROOFS

- + **SOPREMA** offers a comprehensive range of High Water Vapour Permeability (HWVP) roofing underlays.
- + **SOPREMA**'s innovative waterproofing, insulation and roofing solutions meet the RT 2012 thermal regulations requirements and give a building "BBC" status (low consumption building).

roofing & airtightness

TO PROVIDE OPTIMUM INSULATION PERFORMANCE OF VERTICAL WALLS

STRATEC® III



- + High mechanical strength.
- + Maximum distance between rafters: 90 cm.
- + Can be used as a rain barrier.

STRATHERM®



- + Radiant barrier and additional thermal insulation.
- + Reversible for faster installation and reduced waste.

SOPRAVAP® KRAFT



- + Highly resistant to tearing.
- + Contributes to airtightness of building.
- + Grid markings for easy cutting.



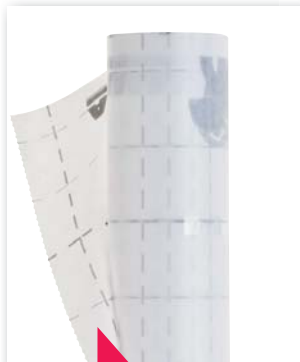


SOPLUTEC®



- + Extra wide for quick installation.

SOPRAVAP® VISIO/XL



- + Translucent.
- + XL: 3 m.

AIR'SOPRASEAL (INT./EXT.)



- + Solvent-free (Int).
- + Odourless (Int).
- + Use at +5 to +35°C
- + Special outdoor use. (Ext.)

AIR'CROSS®



- + 6 diameters available.
- + 8-12; 15-22; 25-32; 75-90; 100-125; 150-165 (mm).

AIR'PATCH®



- + Very resistant to tearing.

AIR'STICK®



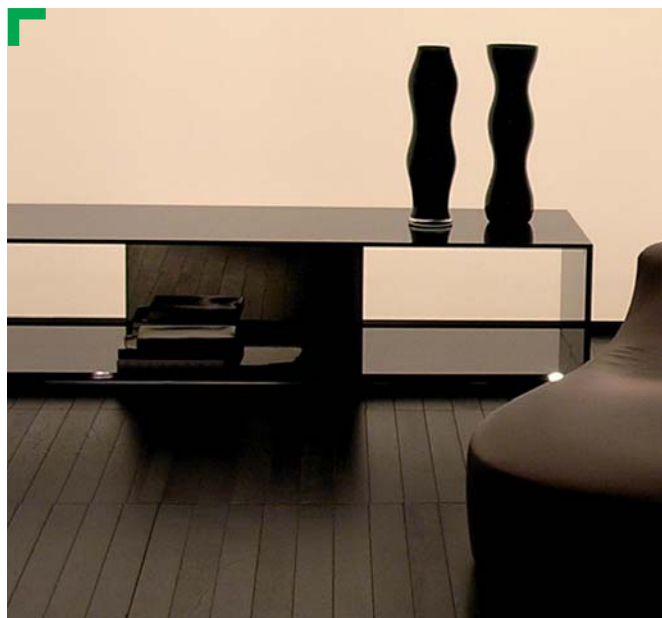
- + Very strong adherence to substrate.



SOPREMA

**TMS® & VELAPHONE®:
THE REFERENCE IN UNDER SCREED
THERMO-ACOUSTIC INSULATION**

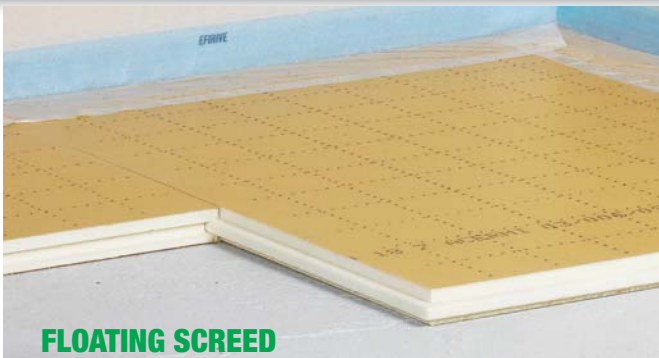
- + Combination of insulating panels and acoustic underlay suitable for all building types: individual and collective housing, commercial buildings...
- + System combining performance with reliability, economy and easy installation.
- + Adaptable to all types of screeds and underfloor heating systems.



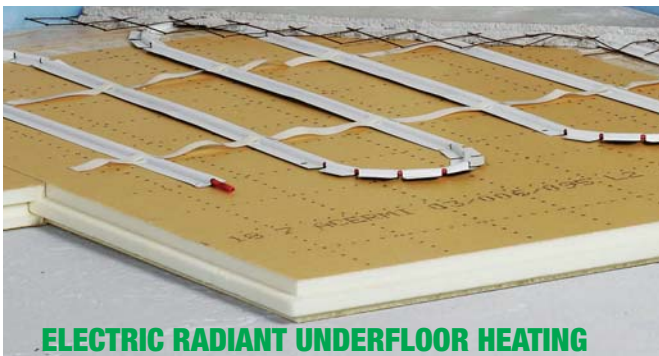
TMS® & velaphone®

28

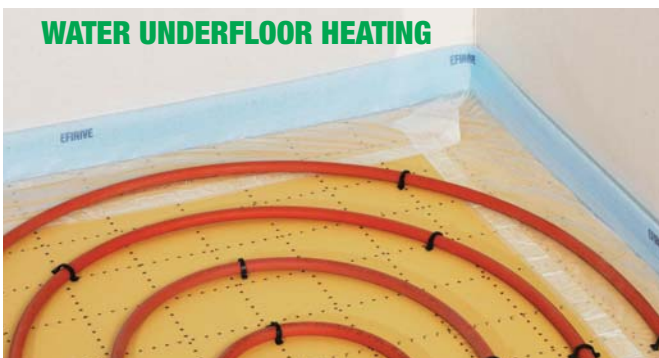




FLOATING SCREED



ELECTRIC RADIANT UNDERFLOOR HEATING



WATER UNDERFLOOR HEATING

THERMAL AND ACOUSTIC REGULATIONS

In order to meet both these requirements, **SOPREMA** and **EFISOL** have worked together to come up with a high-performance thermo-acoustic solution, combining **Velaphone® Confort** with **TMS®**. This combination makes it possible to meet thermo-acoustic requirements when there is underfloor heating or in livable space above unheated spaces.

advantages

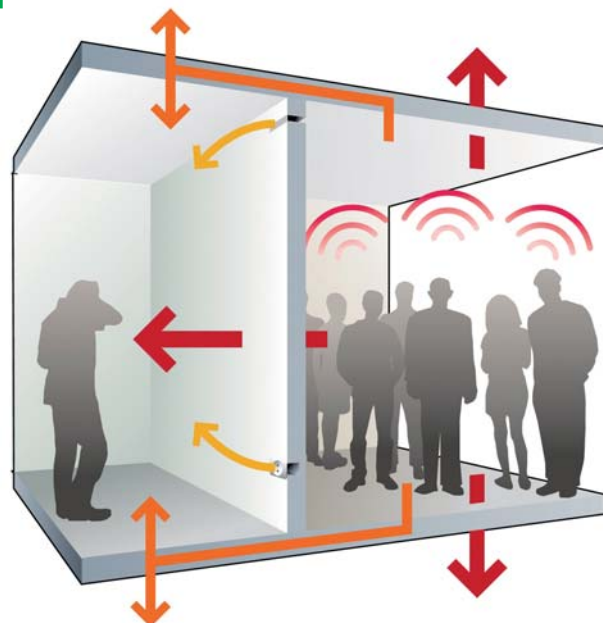
- + Unequalled thermal performance.
- + Rigid and dense.

SOPREMA PROVIDES A SOLUTION TO THE LATEST NOISE REDUCTION REQUIREMENTS WITH ITS COMPREHENSIVE RANGE OF THIN ACOUSTIC UNDERLAYS.

This range consists of three products:

- + **Velaphone® Fibre 22*:**
Excellence in acoustic insulation.
- + **Velaphone® Confort*:**
Optimum acoustic insulation.
- + **Velafibre® Eco:**
The economical acoustic insulation solution.

*Velaphone® Fibre 22 and Velaphone® Confort are certified CSTBat and are on the QUALITEL list.



velaphone® range





PROVIDING ACOUSTIC COMFORT

Acoustic comfort is often neglected in interior design. Yet it is linked to the psychological balance and productivity of a building's occupants.

Good acoustic comfort has a positive influence on the day-to-day quality of life and on relations between the users of a building.

Since 1 January 2000, all the countries in the European Community must apply the same standards and indicate acoustic performance of products in decibels (dB).

advantages

- + Optimum acoustic insulation.
- + Stable acoustic performance over time.

USES & SUBSTRATES

- + **Alsan® 410**, is solvent-free and particularly suited to waterproofing wet rooms: kitchens, showers, communal sanitary facilities,...
- + **Alsan® 410** is used for floors on substrates such as masonry, timber, cement-based floor surfaces as well as for vertical surfaces (plaster board and squares, terracotta, concrete and cement renderings).

APPLICATION/USE

- + New and renovation work in wet rooms.

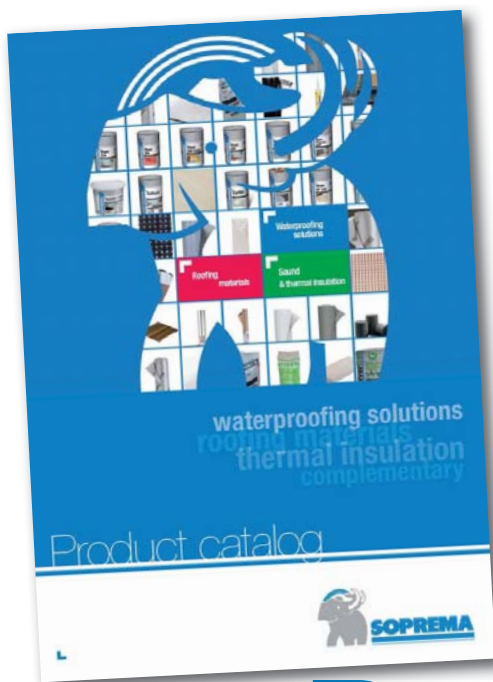
alsan® 410





advantages

- + Solvent-free.
- + Excellent resistance to cracking.
- + Easy application.



Look for the

Product catalog

All the products and useful informations of SOPREMA Group.

Product catalog

34

COLOURS

“COLOUR GUIDE”
3 colors to distinguish each “field”.



INSULATION

ROOFING

WATERPROOFING

CHOICE

THE GUIDE
“TO MAKE
THE RIGHT CHOICE”

The “contents”
allow you to view quickly and easily
all products classified by function and use
as well as corresponding





CONTACTS

THE RIGHT "CONTACT"

SOPREMA products are sold in over 80 countries throughout the world:



SARI SOPREMA Etanchéité Algérie

14 C avenue de Pékin - El Mouradia
18070 Alger
Algeria
Tel./Fax: +213 21 69 44 96
E-mail: soprema_algerie@yahoo.fr
Web: soprema.com

SOPREMA N.V.

industriezone Klein Gent - Bouwelven 5
2280 Grobbendonk
Belgium
Tel.: +32 14 23 07 07
Fax: +32 14 23 07 77
E-mail: info@soprema.be
Web: www.soprema.be

SOPREMA, inc.

1688 Jean-Berchmans-Michaud
Drummondville (Quebec) - J2C 8E9
Canada
Tel.: +1 819 478 8163
Toll free: +1 800 567 1492
Fax: +1 819 478 2289
E-mail: info@marketing@soprema.ca
Web: www.soprema.ca

SOPREMA China

B1608 - lucky Tower - No.3 North 3rd circle road -
Chaoyang District - Beijing
China
Tel: +86 10 6462 0150
Fax: +86 10 6462 0148
E-mail: info@soprema.ca
Web: www.soprema.com.cn

SOPREMA-KIEWA GmbH

Mallaustr. 59 - 68219 Mannheim
Germany
Tel.: +49 621 73 60 30
Fax: +49 621 73 60 444
E-mail: info@soprema.de
Web: www.soprema.de

SOPREMA Etanchéité Maroc

6 route de Zenata- Espérance 2
Ain Sebaa - 20250 Casablanca
Morocco
Tel.: +212 5 22 67 48 45
Fax: +212 5 22 67 48 55
E-mail: maroc@soprema.com
Web: www.soprema.fr

SOPREMA de Mexico

Rio Pilon # 2011 - Fracc. Bernardo Reyes
Monterrey, Nuevo leon - C.P. 64280
Mexico
Tel.: +52 81 837 07 166 /
+52 81 837 07 167
Fax: +52 898 98 5551
Web: www.soprema.com.mx

Troelstra & de Vries

Geeuwkade 21 - Postbus 2 - 8650 AA IJlst
Netherlands
Tel.: +31 515 53 30 00
Fax: +31 515 53 31 11
E-mail: info@troelstra-devries.nl
Web: www.troelstra-devries.nl

SOPREMA Polska Sp. z o.o.

Ul. Zaliwskiego 9A - 04-145 Warszawa
Poland
Tel.: + 48 22 879 90 92
Fax: +48 22 879 84 94
E-mail: biuro@soprema.pl
Web: www.soprema.pl



www.soprema.com

PRESSCRIPTO: PRODUCT SELECTION AID

Your permanent online access to french technical information on **SOPREMA** waterproofing products on www.soprema.fr/prescripto. Also available on a **USB key**.

- + Selection guide by main categories.
- + Texts in Word format for easier integration into your specification documents.
- + Automatic updates.



prescripto



WEBSITE - SOPREMA.COM



advantages

- + User-friendly.
- + User-friendly.
- + Customised access and information levels.



www.soprema.com

other websites of Soprema Group

EFISOL.FR



FLAG.IT



SOLARDIS.FR



SOPRA-STAR.FR



UNIVERCELL.FR



SOPREMA VIDEOS!

- + Discover on video all the latest news, references and application advice:

youtube.com/user/Videosoprema

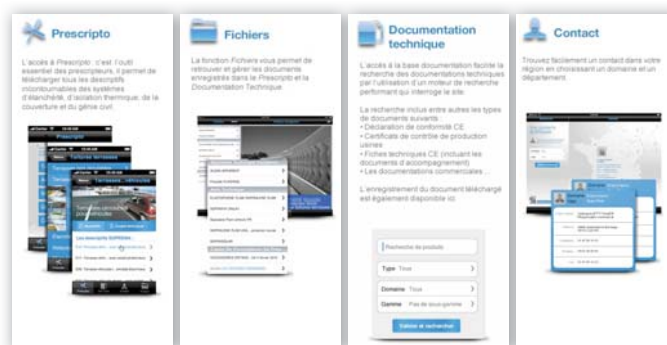


You Tube
Broadcast Yourself™



MYSOPREMA TOOLBOX

- + **SOPREMA**, pioneer in the world of waterproofing, has launched a free application for iPhone and iPad. With "**MySoprema Toolbox**", the tool that follows you everywhere, professionals have access to all the waterproofing, insulation and roofing solutions online, anywhere and anytime.
- + Four functions designed as a carry-along technical assistance service for all professionals: Prescripto, Files, Technical Documentation and Contact.



My Soprema Toolbox

38

SOPREMA

MySoprema toolbox

L'application iPhone et iPad de référence

pour connaître les systèmes d'étanchéité, d'isolation de SOPREMA.

APPLICATION GRATUITE

Disponible sur **App Store**

Accueil de l'application iPhone

Prescripto Doc Tech Contact Fichiers

- + "**MySoprema Toolbox**": A practical and dynamic application for professionals in the construction industry.



our documentation



TO RECEIVE OUR SALES DOCUMENTATION

- + By e-mail: contact@soprema.fr
- + By post, complete the form below and send or fax it to us: +33(0) 3 88 79 84 01.

Please send me the following **SOPREMA** documentation:

- ☐ **Sopra® Star**
- ☐ **Soprasolar® Fix**
- ☐ **Practical guide to liquid waterproofing**
- ☐ **Product catalog**
- ☐ **I would like a sales representative to contact me.**

YOUR CONTACT INFORMATION

Company:

Last name:

First name:

Position:

Address:

Postcode:

Telephone:

Fax :

E-mail :



www.soprema.com

SOPREMA SAS - Communication Department
 14 rue de Saint-Nazaire
 BP 60121
 67025 STRASBOURG Cedex 1 France

SOPREMA
 GROUP



SOPREMA at your service

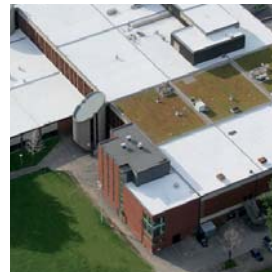
looking for a sales contact in order to discuss a future project or a project that is under way? Any questions about the implementation of our product range?

SOPREMA Export Department

Tel.: **+33 3 88 79 84 84** Fax: **+33 3 88 79 84 85**

E-mail: **export@soprema.com**

More information on www.soprema.com



eco struction



SOPREMA
GROUP

14 rue de Saint-Nazaire - BP 60121
67025 STRASBOURG Cedex 1- France
Tél. : +33 (0) 3 88 79 84 00 - Fax : +33 (0) 3 88 79 84 01
e-mail : contact@soprema.fr - www.soprema.fr