

Soprema UK Ltd

Soprema House
Freebournes Road
Witham
Essex, CM8 3UN

Tel: 0330 0580668 Fax: 0845 194 8728

e-mail: info@soprema.co.uk

website: soprema.co.uk



Agrément Certificate

21/5915

Product Sheet 1 Issue 1

COLPHENE BSW STRUCTURAL WATERPROOFING SYSTEMS

COLPHENE PRE-APPLIED MEMBRANES SYSTEMS

This Agrément Certificate Product Sheet⁽¹⁾ relates to Colphene Pre-Applied Membranes Systems, a range of polymer-modified bitumen membranes for use in externally pre-applied damp proof and waterproofing applications and as gas-resistant membranes, in below-ground concrete structures.

(1) Hereinafter referred to as 'Certificate'.

CERTIFICATION INCLUDES:

- factors relating to compliance with Building Regulations where applicable
- factors relating to additional non-regulatory information where applicable
- independently verified technical specification
- assessment criteria and technical investigations
- design considerations
- installation guidance
- regular surveillance of production†
- formal three-yearly review†.

KEY FACTORS ASSESSED

Resistance to water and water vapour — the systems, including joints, provide an effective barrier to the passage of water under hydrostatic pressure and water vapour from the ground (see section 6).

Resistance to underground gases — systems incorporating Colphene BSW V will restrict the ingress of radon, methane and carbon dioxide into the structure (see section 7).

Resistance to mechanical damage — the systems will accept, without damage, the limited foot traffic and loads associated with installation, and will accommodate the minor movements likely to occur under normal service conditions (see section 8).

Adhesion — the systems will form a satisfactory bond with cured concrete (see section 9).

Durability — the systems, when fully protected, under normal service conditions, will provide an effective barrier to the transmission of liquid water and water vapour and (for systems incorporating Colphene BSW V) will restrict the ingress of radon, methane and carbon dioxide for the life of the structure in which they are incorporated (see section 12).

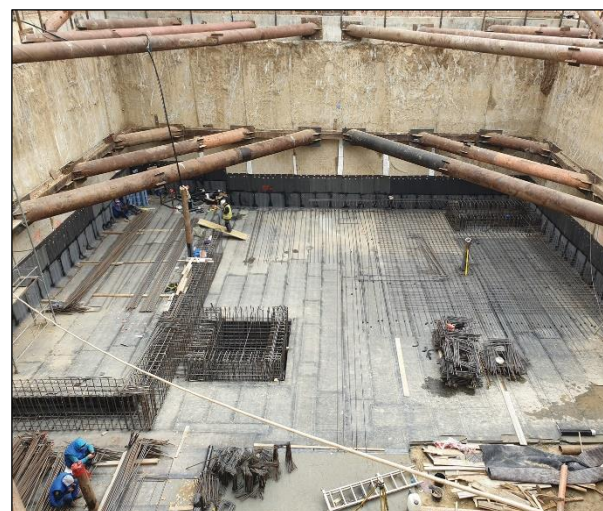
The BBA has awarded this Certificate to the company named above for the systems described herein. These systems have been assessed by the BBA as being fit for their intended use provided they are installed, used and maintained as set out in this Certificate.

On behalf of the British Board of Agrément

Date of First issue: 16 September 2021

Hardy Giesler
Chief Executive Officer

Certificate amended on 16 January 2023 to update the system components in section 1.



The BBA is a UKAS accredited Inspection Body (No.4345).

This certificate has been amended on 16 January 2023 as part of a transition of The BBA Agrément Certificate scheme delivered under the BBA's ISO/IEC 17020 accreditation. Sections marked with the symbol † are not issued under accreditation.

Readers MUST check the validity and latest issue number of this Agrément Certificate by either referring to the BBA website or contacting the BBA directly. Any photographs are for illustrative purposes only, do not constitute advice and should not be relied upon

British Board of Agrément

Building 3
Hatters Lane, Croxley Park
Watford WD18 8YG

©2021

tel: 01923 665300
clientservices@bbacerts.co.uk
www.bbacerts.co.uk

BBA 21/5915 PS1 Issue 1

Page 1 of 11

Regulations

In the opinion of the BBA, Colphene Pre-Applied Membranes Systems, if installed, used and maintained in accordance with this Certificate, can satisfy or contribute to satisfying the relevant requirements of the following Building Regulations (the presence of a UK map indicates that the subject is related to the Building Regulations in the region or regions of the UK depicted):



The Building Regulations 2010 (England and Wales) (as amended)

Requirement: C1(2) Comment:	Site preparation and resistance to contaminants When properly installed in a correctly designed structure, systems incorporating Colphene BSW V will form an effective barrier to the movement of radon, methane and carbon dioxide and will contribute to a structure satisfying this Requirement. See sections 7.1 and 7.2 of this Certificate.
Requirement: C2(a) Comment:	Resistance to moisture The systems, including joints, will enable a structure to satisfy this Requirement. See section 6 of this Certificate.
Regulation: 7(1) Comment:	Materials and workmanship The systems are acceptable. See section 12 and the <i>Installation</i> part of this Certificate.



The Building (Scotland) Regulations 2004 (as amended)

Regulation: 8(1) Comment:	Durability, workmanship and fitness of materials The use of the systems satisfies the requirements of this Regulation. See section 12 and the <i>Installation</i> part of this Certificate.
Regulation: 9 Standard: 3.1 Standard: 3.2 Comment:	Building standards applicable to construction Site preparation – harmful and dangerous substances Site preparation – protection from radon gas When properly installed in a correctly designed structure, systems incorporating Colphene BSW V will form an effective barrier to the movement of radon, methane and carbon dioxide, enabling compliance with these Standards, with reference to clauses 3.1.2 ⁽¹⁾⁽²⁾ , 3.1.6 ⁽¹⁾⁽²⁾ , 3.1.7 ⁽¹⁾⁽²⁾ and 3.2.2 ⁽¹⁾⁽²⁾ . See sections 7.1 and 7.2 of this Certificate.
Standard: 3.4 Comment:	Moisture from the ground The systems, including joints, will enable a structure to satisfy the requirements of this Standard, with reference to clauses 3.4.2 ⁽¹⁾⁽²⁾ , 3.4.4 ⁽¹⁾⁽²⁾ and 3.4.6 ⁽¹⁾⁽²⁾ . See section 6 of this Certificate.
Standard: 7.1(a) Comment:	Statement of sustainability The systems can contribute to satisfying the relevant requirements of Regulation 9, Standards 1 to 6, and therefore will contribute to a construction meeting a bronze level of sustainability as defined in this Standard.
Regulation: 12 Comment:	Building standards applicable to conversions Comments in relation to the systems under Regulation 9, Standards 1 to 6, also apply to this Regulation, with reference to clause 0.12.1 ⁽¹⁾⁽²⁾ and Schedule 6 ⁽¹⁾⁽²⁾ .

(1) Technical Handbook (Domestic).

(2) Technical Handbook (Non-Domestic).



The Building Regulations (Northern Ireland) 2012 (as amended)

Regulation:	23(a)(i)(iii)(b)(i)	Fitness of materials and workmanship
Comment:		The systems are acceptable. See section 12 and the <i>Installation</i> part of this Certificate.
Regulation:	26(1)(b)(2)	Site preparation and resistance to contaminants
Comment:		When properly installed in a correctly designed structure, systems incorporating Colphene BSW V will form an effective barrier to the movement of radon, methane and carbon dioxide, enabling compliance with the requirements of this Regulation. See sections 7.1 and 7.2 of this Certificate.
Regulation:	28(a)	Resistance to moisture and weather
Comment:		The systems, including joints, will enable a structure to satisfy the requirements of this Regulation. See section 6 of this Certificate.

Construction (Design and Management) Regulations 2015

Construction (Design and Management) Regulations (Northern Ireland) 2016

Information in this Certificate may assist the client, designer (including Principal Designer) and contractor (including Principal Contractor) to address their obligations under these Regulations.

See sections: 1 *Description* (1.1) and 3 *Delivery and site handling* (3.2 and 3.3) of this Certificate.

Additional Information

NHBC Standards 2021

In the opinion of the BBA, Colphene Pre-Applied Membranes Systems, if installed, used and maintained in accordance with this Certificate, can satisfy or contribute to satisfying the relevant requirements in relation to *NHBC Standards*, Chapters 4.1 *Land quality — managing ground conditions*, 5.1 *Substructure and ground bearing floors* and 5.4 *Waterproofing of basements and other below ground structures*.

Where Grade 3 protection is required and the below ground wall retains more than 600 mm measured from the top of the retained ground to the lowest finished floor level, the system must be used in combination with either Type B or Type C waterproofing protection, as defined in BS 8102 : 2009.

The Certificate holder should be consulted for approved Type B and Type C solutions.

CE marking

The Certificate holder has taken the responsibility of CE marking the individual membranes in accordance with harmonised European Standard EN 13969 : 2004.

Technical Specification

1 Description

1.1 Colphene Pre-Applied Membranes Systems comprise the following SBS-modified bitumen membranes:

Loose-laid waterproofing membranes

- Colphene BSW Unilay HP – a nominal 4.5 mm thick, waterproofing membrane incorporating a dual non-woven polyester reinforcement and additional fleece. The membrane has a 120 mm selvedge allowing for 40 mm self-adhesive and 80 mm heat-welded lap jointing. The membrane is finished with specially engineered silicon dioxide crystals on the topside and a thermoplastic film on the underside.

- Colphene BSW H – a nominal 3.5 mm thick, waterproofing membrane incorporating a non-woven polyester reinforcement with a 100 mm selvedge allowing for 55 mm self-adhesive and 45 mm heat-welded lap jointing. The membrane is finished with specially engineered silicon dioxide crystals on the topside and a thermoplastic film on the underside.
- Colphene BSW H Plus – a nominal 4.5 mm thick, waterproofing membrane incorporating a non-woven polyester reinforcement with a 100 mm selvedge allowing for 55 mm self-adhesive and 45 mm heat-welded lap jointing. The membrane is finished with specially engineered silicon dioxide crystals on the topside and a thermoplastic film on the underside.
- Colphene BSW H 3.5 – a nominal 3.5 mm thick, waterproofing membrane incorporating a non-woven polyester reinforcement with a 120 mm selvedge allowing for 40 mm self-adhesive and 80 mm heat welded lap jointing. The membrane is finished with specially engineered silicon dioxide crystals on the topside and a thermoplastic film on the underside.

Self-adhesive waterproofing membranes,

- Colphene BSW V – a nominal 3.0 mm thick, self-adhesive waterproofing membrane incorporating a composite reinforcement with a 100 mm selvedge allowing for 55 mm self-adhesive and 45 mm heat-welded lap jointing. The membrane is finished with specially engineered silicon dioxide crystals on the topside and a release film on the underside.
- Colphene BSW V 3.0 – a nominal 3.0 mm thick, self-adhesive waterproofing membrane incorporating a composite reinforcement with a 120 mm selvedge allowing for 40 mm self-adhesive and 80 mm heat-welded lap jointing. The membrane is finished with specially engineered silicon dioxide crystals on the topside and a release film on the underside.

Protection membranes

The following membranes are available for use as additional protection.

- Colphene 3000 – a nominal 1.5 mm thick, self-adhesive membrane incorporating a triple-laminated polyethylene film on the top surface and siliconised release film on the lower face. The membrane is for use in vertical applications.
- Colphene 3000 HT – a nominal 1.5 mm thick, self-adhesive membrane incorporating a triple-laminated polyethylene film on the top surface and siliconised release film on the lower face. The membrane is for use in vertical applications.

1.2 The nominal characteristics of the membranes are given in Table 1.

Table 1 Nominal characteristics

Characteristic (unit)	Nominal declared values							
Colphene membrane:	BSW Unilay HP	BSW H	BSW H Plus	BSW H 3.5	BSW V	BSW V 3.0	3000	3000 HT
Length (m)	8	10	8	10	10	10	18.7	23
Width (m)	1	1	1	1	1	1	1	1
Thickness (mm)	4.5	3.5	4.5	3.5	3.0	3.0	1.5	1.5
Mass per unit area (kg·m ⁻²)	5.0	4.3	5.6	4.3	3.8	3.8	1.5	1.3
Roll weight (kg)	40	43	45	43	38	38	29	30
Tensile strength (N/50mm)								
Machine direction	1150	1100	1100	1100	800	800	500	500
Transverse direction	900	800	800	800	700	700	600	600
Elongation (%)								
Machine direction	55	55	55	55	45	45	20	20
Transverse direction	55	55	55	55	45	45	10	10
Resistance to impact (hard substrate) (mm)	1500	1000	1000	1000	650	650	150	150
Resistance to static loading (kg)	20	15	15	15	10	5	20	20
Low temperature flexibility (°C)	-10	-16	-16	-16	-16	-16	-25	-25
Watertightness (kPa)	-	600	-	-	600	-	100	-
Pass at:								

1.3 Ancillary items for use with the systems include:

- Elastocol 500 primer – a solvent-based bitumen primer used for application of torch-on membranes
- Elastocol 600 primer – a solvent-based bitumen primer used for application of self-adhesive membranes
- Sopradere primer – a solvent-based bitumen primer used for application of torch-on membranes
- Aquadere primer – a water-based bitumen emulsion primer used for application of torch-on membranes
- Aquadere Stick primer – a water-based bitumen emulsion primer used for application of self-adhesive membranes.

1.4 Other products that may be used with the systems, but which are outside the scope of the Certificate include:

- drainage boards/systems
- specialist sealants and banding
- waterstops and injection systems
- fasteners for temporarily fixing vertically applied membrane
- clamping rings, used for securing membrane around penetrations
- flashing systems
- repair mortars/compounds
- angle fillets.

2 Manufacture

2.1 The products are manufactured using conventional blending techniques and continuous coating processes.

2.2 As part of the assessment and ongoing surveillance of product quality, the BBA has:

- agreed with the manufacturer the quality control procedures and product testing to be undertaken
- assessed and agreed the quality control operated over batches of incoming materials
- monitored the production process and verified that it is in accordance with the documented process
- evaluated the process for management of nonconformities
- checked that equipment has been properly tested and calibrated

- undertaken to carry out the above measures on a regular basis through a surveillance process, to verify that the specifications and quality control operated by the manufacturer are being maintained.

2.3 The management system of the manufacturer has been assessed and registered as meeting the requirements of ISO 9001 : 2015 by SGS (Certificate FR18/81842815).

3 Delivery and site handling

3.1 The membranes are delivered to site in rolls stacked upright on pallets with the selvedge edge on top. Each pallet is labelled with the batch number.

3.2 The primers are supplied in containers of the following sizes:

- Elastocol 500 (5 l and 30 l)
- Elastocol 600 (1 l, 5 l and 30 l)
- Sopradere (5l and 30 l)
- Aquadere (1 l, 5 l and 25 l)
- Aquadere Stick (1 l, 5 l and 25 l).

3.3 The Certificate holder has taken the responsibility of classifying and labelling the systems under the *CLP Regulation (EC) No 1272 / 2008 on the classification, labelling and packaging of substances and mixtures*. Users must refer to the relevant Safety Data Sheet(s).

Assessment and Technical Investigations

The following is a summary of the assessment and technical investigations carried out on Colphene Pre-Applied Membranes Systems.

Design Considerations

4 Use

4.1 Colphene Pre-Applied Membranes Systems are satisfactory for use as Type A waterproofing protection as defined in BS 8102 : 2009 for the waterproofing of new-build underground structures and damp-proofing in accordance with the relevant clauses of CP 102 : 1973, Section 3.

4.2 The systems can be used to provide an effective barrier to the transmission of liquid water under hydrostatic pressure and water vapour where Grades 1 to 3 waterproofing protection is required, as defined in Table 2 of BS 8102 : 2009.

4.3 Where Grade 3 waterproofing protection is required, the environment must also be controlled by use of ventilation, dehumidification and/or air conditioning, as appropriate, to ensure dampness does not occur. See also the *Additional information* section of this Certificate relating to *NHBC Standards*.

4.4 Systems incorporating Colphene BSW V are also satisfactory for use in restricting the ingress of radon, methane and carbon dioxide into the structure (see also section 7 of this Certificate).

4.5 The systems are compatible with concrete and are resistant to those chemicals likely to occur under normal service conditions. However, care must be taken to prevent contact with mould oils and hydrocarbons.

4.6 The systems must be fully protected as soon as practicable after they are installed, in accordance with the Certificate holder's instructions.

5 Practicability of installation

Installation of the systems must only be carried out by installers who have been trained by the Certificate holder.

6 Resistance to water and water vapour



6.1 The systems, including joints, when completely sealed and consolidated are impervious to water and will adequately resist the passage of water under hydrostatic pressure and water vapour from the ground, and so enable a structure to meet the relevant requirements of the national Building Regulations.

6.2 The waterproofing membranes Colphene BSW H and Colphene BSW V, including joints, remained watertight when tested at a hydrostatic pressure of up to 600 kPa.

7 Resistance to underground gases



7.1 Colphene BSW V membrane will restrict the ingress of radon, methane and carbon dioxide into buildings from landfill and naturally occurring sources and satisfy the performance criteria for a gas-resistant membrane as defined in BS 8485 : 2015. In addition, Colphene BSW H will restrict the ingress of radon gas from naturally occurring sources.

7.2 The other membranes do not constitute gas membranes as defined in BS 8485 : 2015 and cannot individually be awarded a gas score as described in BS 8485: 2015. However, when used in addition to a Type B structural barrier waterproofing in basement floor and wall constructions conforming to BS 8102 : 2009, Grades 2 or 3 waterproofing, the membranes will contribute towards the structural barrier in restricting the ingress of methane and carbon dioxide into a building from landfill and naturally occurring sources, with reference to BS 8485 : 2015, Table 5.

7.3 Measured gas permeability/diffusion values of the membranes, including joints, are given in Table 2.

Table 2 Gas permeabilities of the membranes

	Gas transmission (ISO 15105-1) (ml·m ⁻² ·day ⁻¹ ·atm ⁻¹)		Radon diffusion coefficient (ISO/TS 11665-13) (m ² ·s ⁻¹)
	Methane ⁽¹⁾ (unjointed/jointed)	Carbon dioxide (unjointed/jointed)	unjointed / jointed
Colphene BSW V	1.9/ 27.3	25.6 / 265	1.4 x 10 ⁻¹¹ / 1.1 x 10 ⁻¹¹
Colphene BSW H	103 / -	507 / -	2.9 x 10 ⁻¹¹ / -
Colphene BSW Unilay HP	69.3 / -	358 / -	-

(1) BS 8485 : 2015 requires that the methane transmission measured in accordance with BS ISO 15105-1 : 2007 for a gas-resistant membrane is < 40 ml·m⁻²·day⁻¹·atm⁻¹.

7.4 In the opinion of the BBA, Colphene BSW V and Colphene BSW H satisfy the criterion for a radon gas-resistant membrane in BRE Report BR 211 : 2015.

7.5 For gas control applications, the membrane must be linked to other compatible gas-resistant membranes and damp-proof courses to ensure that the protection extends over the entire footprint of the structure. The Certificate holder must be consulted for suitable products.

8 Resistance to mechanical damage

8.1 The systems can accept the limited foot traffic and light loads associated with the installation and maintenance operations without damage.

8.2 When installed, the systems are capable of accommodating the minor structural movements likely to occur under normal service conditions.

8.3 The systems can be damaged by sharp objects, and care must be taken to protect exposed surfaces during construction and backfilling operations.

8.4 Where damage does occur, the membrane must be repaired as soon as practicable (see section 15)

9 Adhesion

When cured, the poured concrete will bond to the surface of the membrane to form a satisfactory bond. The Certificate holder should be consulted for information regarding the conditions required to achieve optimum adhesion.

10 Effect of temperature

The systems will not be adversely affected by temperatures likely to occur during the installation or in-service.

11 Maintenance

As the systems are confined and have suitable durability, maintenance is not required. Any damage occurring during the installation must be repaired prior to backfilling (see section 15).

12 Durability



The systems, when fully protected and subjected to normal service conditions, will provide an effective barrier to the transmission of water under hydrostatic pressure, water vapour and (systems incorporating Colphene BSW V) will restrict the ingress of radon, methane and carbon dioxide for the life of the structure in which they are incorporated.

Installation

13 General

13.1 Colphene Pre-Applied Membranes Systems must be installed in accordance with the relevant requirements of BS 8000-0 : 2014, BS 8000-4 : 1989, BS 8102 : 2009, section 3 of CP 102 : 1973, the Certificate holder's instructions and this Certificate.

13.2 The systems can be installed under dry conditions and at ambient air temperatures between +5°C and 45°C. Standing water, snow or ice must be removed prior to application to prevent contamination of overlap areas.

13.3 All surfaces to which the systems are applied must be sound and solid to ensure no movement occurs during the concrete pour.

13.4 Horizontal surfaces should be a smooth and level concrete blinding or well-compacted granular fill, and must be free from loose aggregate or other sharp protrusions and be in accordance with the Certificate holder's installation instructions.

13.5 Vertical surfaces must be smooth and uniform and can be – but are not limited to – wood, formwork and diaphragm walls. Where required, a suitable geosynthetic drainage membrane may be applied (via mechanical fixing), to create a suitable surface for the membranes to be attached to. The Certificate holder should be consulted for suitable products.

13.6 Sharp edges should be chamfered to avoid damage to the membranes, and a cant strip applied at changes of direction from the vertical to horizontal.

14 Procedure

14.1 If required, a suitable geosynthetic drainage membrane should be applied to vertical earth-retention surfaces, with the filter side facing the soil-retention system. The drainage membrane should be mechanically fixed in accordance with the Certificate holder's instructions.

14.2 Strips of the specified Colphene BSW membrane, depending on the system to be applied, are fixed to the earth-retention system and taken down over the wall floor junction to finish on the horizontal slab. The strips should be temporarily mechanically fixed at the top edge. Requirements for side laps must be observed between adjacent strips.

14.3 The specified horizontally applied Colphene BSW waterproofing membrane is cut to the required length and loose laid over the prepared substrate, ensuring the sanded face is uppermost, overlapping onto the vertically applied membrane strips by a minimum of 150 mm and the lap sealed by heat welding.

14.4 Adjacent sheets are laid, ensuring the specified side overlaps are observed, and using the self-adhesive part of the selvedge to ensure laps are properly aligned. The side lap is completely sealed by heat welding using a gas torch or by hot air welding. End laps must be a minimum of 150 mm and staggered by at least 300 mm to avoid excessive localised thickness build-up, and sealed by heat welding.

14.5 Vertical application is continued by applying the specified membrane to the earth-retention system or drainage membrane and to overlap the membrane strips (see section 14.2) by at least 150 mm, and sealed by heat welding. Adjacent sheets should be applied using the self-adhesive part of the selvedge to ensure laps are properly aligned. The side lap is completely sealed by heat welding using a gas torch or by hot air welding.

14.6 Protection membrane(s), where required, should be applied in accordance with the Certificate holder's instructions.

15 Repair

15.1 Damage to a component membrane or the system must be repaired to reinstate it to the original specification in accordance with the Certificate holder's instructions.

15.2 The repair patch must extend at least 150 mm from all edges of the damaged area onto sound material and must be thermally welded.

15.3 A bridging strip of the same membrane is then applied to bridge across the repair patch and sound material by a minimum of 150 mm in both cases, and thermally welded.

Technical Investigations

16 Tests

Tests were carried out on the membranes and coating mass, and the results assessed to determine:

- characterisation of the coating masses (needle penetration, and ring and ball softening point)
- visible defects
- unrolling at low temperature
- width and straightness
- mass per unit area
- thickness
- resistance to impact
- resistance to static loading
- flexibility at low temperature
- resistance to nail tear
- joint shear strength
- water vapour transmission
- tensile strength and elongation
- resistance to fatigue cycling (fully bonded membrane)
- peel bond to substrate
- peel bond to poured concrete
- slippage.

17 Investigations

17.1 An evaluation was made of independent tests data relating to resistance to hydrostatic pressure.

17.2 An evaluation was made of independent test data relating to gas permeability for methane and radon.

17.3 The manufacturing process was evaluated, including the methods adopted for quality control, and details were obtained of the quality and composition of the materials used.

Bibliography

BR 211 : 2015 *Radon: Guidance on protective measures for new buildings*

BS 8000-0 : 2014 *Workmanship on construction sites – Introduction and general principles*

BS 8000-4 : 1989 *Workmanship on building sites – Code of practice for waterproofing*

BS 8102 : 2009 *Code of practice for protection of below ground structures against water from the ground*

BS 8485 : 2015 + A1 : 2019 *Code of practice for the design of protective measures for methane and carbon dioxide ground gases for new buildings*

BS ISO 15105-1 : 2007 *Plastics – Film and sheeting – Determination of gas-transmission rate – Differential-pressure methods*

CP 102 : 1973 *Code of practice for protection of buildings against water from the ground*

EN 13969 : 2004 *Flexible sheets for waterproofing – Bitumen damp proof sheets including bitumen basement tanking sheets – Definitions and characteristics*

ISO 9001 : 2015 *Quality management systems – Requirements*

Conditions

1 This Certificate:

- relates only to the product that is named and described on the front page
- is issued only to the company, firm, organisation or person named on the front page – no other company, firm, organisation or person may hold or claim that this Certificate has been issued to them
- is valid only within the UK
- has to be read, considered and used as a whole document – it may be misleading and will be incomplete to be selective
- is copyright of the BBA
- is subject to English Law.

2 Publications, documents, specifications, legislation, regulations, standards and the like referenced in this Certificate are those that were current and/or deemed relevant by the BBA at the date of issue or reissue of this Certificate.

3 This Certificate will be displayed on the BBA website, and the Certificate Holder is entitled to use the Certificate and Certificate logo, provided that the product and its manufacture and/or fabrication, including all related and relevant parts and processes thereof:

- are maintained at or above the levels which have been assessed and found to be satisfactory by the BBA
- continue to be checked as and when deemed appropriate by the BBA under arrangements that it will determine
- are reviewed by the BBA as and when it considers appropriate.

4 The BBA has used due skill, care and diligence in preparing this Certificate, but no warranty is provided.

5 In issuing this Certificate the BBA is not responsible and is excluded from any liability to any company, firm, organisation or person, for any matters arising directly or indirectly from:

- the presence or absence of any patent, intellectual property or similar rights subsisting in the product or any other product
- the right of the Certificate holder to manufacture, supply, install, maintain or market the product
- actual installations of the product, including their nature, design, methods, performance, workmanship and maintenance
- any works and constructions in which the product is installed, including their nature, design, methods, performance, workmanship and maintenance
- any loss or damage, including personal injury, howsoever caused by the product, including its manufacture, supply, installation, use, maintenance and removal
- any claims by the manufacturer relating to UKCA, UKNI or CE marking.

6 Any information relating to the manufacture, supply, installation, use, maintenance and removal of this product which is contained or referred to in this Certificate is the minimum required to be met when the product is manufactured, supplied, installed, used, maintained and removed. It does not purport in any way to restate the requirements of the Health and Safety at Work etc. Act 1974, or of any other statutory, common law or other duty which may exist at the date of issue or reissue of this Certificate; nor is conformity with such information to be taken as satisfying the requirements of the 1974 Act or of any statutory, common law or other duty of care.